

**INDIA'S 1<sup>st</sup>**  
**UNIVERSITY**  
POWERED BY  
**NASSCOM FutureSkills®**



**SRM**  
**UNIVERSITY**  
DELHI-NCR, SONEPAT



Take advantage of  
*Experiential Learning*  
at SRMUH

Engineering & Technology ✦ Law  
Hotel Management ✦ Finance and Commerce  
Management Studies ✦ Science & Humanities

# UNIVERSITY PROSPECTUS 2022-23

Established under Haryana Private University Act 2006 as amended by Act 8 of 2013  
Recognised by UGC us 2(f) of UGC Act, 1956, AIU and approved by BCI, DSIR and NCHMCT

# CONTENTS

Message from the Chancellor	2	Humanities and Social Sciences	26
Message from the Vice-Chancellor	3	Department of Mathematics	27
SRM Group	4	Department of Microbiology	28
SRM University Delhi-NCR Sonepat	5	Department of Physics	29
Vision & Mission	5	Department of Commerce	30
International & Industry Collaboration	6	Department of Management Studies	31
International Advisory Board	6	Department of Law	32
Central Library & Law Library	7	SRM Institute of Hotel Management	33
Centre for Drug Discovery and Development (C4D)	8	SRM PRIMSR Hospital	34
SRM - SIEMENS Centre of Excellence (SSCoE)	10	Jan Aushadhi Medical Store	35
Collaboration with BOSCH	11	National Cadet Corps	36
Center for Innovation, Incubation And Entrepreneurship	12	National Service Scheme	38
Department of Biomedical Engineering	14	State-of-the-art Laboratories	40
Department of Civil Engineering	15	Hostel	41
Department of Computer Science & Engineering	16	Student's Life	42
Department of Electronics and Communication Engg.	17	Student Scholarships	45
Department of Electrical and Electronics Engineering	18	Programs & Fee Structure	48
Department of Mechanical Engineering	19	Placements	54
Department of Agriculture	20	Our Recruiters	55
Department of Biotechnology	21	Various Committees	
Department of Chemistry	22	- Anti Ragging Committee	57
Department of Computer Science	23	- Grievance Redressal Committee	58
Department of Environmental Sciences	24	- Internal Complaints Committee	58
Department of Food Technology	25	- Disciplinary Committee	59

## WHY SHOULD WE CHOOSE SRM UNIVERSITY DELHI-NCR, SONEPAT

- Excellent scholarship facility for deserving candidates.
- Multi-Cultural university truly diversified, drawing students from diversified socio-economic strata across various states.
- Born with a vision of developing into a world class university
- Ranked for Student Diversity & Professional Education by Education World in 2019
- Recognised by UGC u/s 2(f) of UGC Act, 1956 / AIU and approved by BCI, DSIR and NCHMCT
- Incubation Centre to ignite and nurture young minds
- Highly qualified faculty with research acumen
- Expert Placement Cell to ensure training and employment
- Recognised as a Scientific and Industrial Research Organisation (SIRO) by the Department of Scientific and Industrial Research (DSIR), Government of India
- Approved by DST to conduct INSPIRE Internship Science Camp for school students
- A Regional Innovation Science Hub for Innovation (RISHI) of DST, Govt. of India
- SRM University Delhi-NCR, Sonepat campus is amongst the first IET Academic Affiliate in Haryana
- Established Institution Innovation Council (IIC) as per the Norms of Innovation Cell, Ministry of HRD, Govt. of India (November 2018)
- First and only Private University in Haryana to be ICI and IEI institutional member.

# MESSAGE FROM THE CHANCELLOR

The SRM Group was founded by Shri T. Paarivendhar in 1969 with the motto that quality education is a right of every child and this quality education must reach each and every child of this great nation. The beginning of this vision was indeed very humble – with a primary school in Chennai, that is, Florence Nightingale Primary School – however, this honest vision and true passion soon took major leaps and SRM Group established its many higher education institutions not just in Tamil Nadu, but also in different parts of the country. SRM University Delhi-NCR is an example of that undeterred vision and passion of our founder Chancellor, Shri T. Paarivendhar.

Ever since its inception in 2013 as one of the first university campuses in Rajiv Gandhi Education City, SRMUH (SRM University Delhi-NCR) has strove hard to impart quality education and a perfect space for mental, physical and academic growth, and the various achievements in these few years are a mark of the legacy that SRMUH has successfully shared with the bright young minds. As the Chancellor of this university, I feel proud to note that even amidst tremendous uncertainty that the entire world is facing (at present), SRMUH has been successfully disseminating knowledge – knowledge that will enable the students to be industry-ready the moment they step-out of the cocoon of the university.



The centres of excellence, like C4D (Centre for Drug Design Discovery & Development), SEIMENS COE and BOSCH are a product of the unrelenting efforts of the academicians and the think-tank of SRMUH, and these have emerged as the perfect place for the students to explore and utilize in order to realize their dreams and stay abreast with the latest demands and expectations of today's Industry 4.0 world.

The education sector, its demands, expectations and requirements are evolving with every passing day. Human civilization is creating new records in terms of innovation at a much faster rate than it did a decade or two ago. Industry 4.0 is one of the biggest examples of this new demand and the competitive world. It is important to note here that Industry 4.0 has not just affected the technological disciplines, but all other areas of study, starting from Commerce to Law to Humanities have been a part of this new change and demands. Thus, it is imperative that we prepare our children adequately to not just survive but succeed in this fast growing and ever-changing world with the required academic and professional knowledge and experience, irrespective of the discipline they choose to study. The 21st century is a century of heightened interdisciplinary interaction – all subjects and disciplines are interconnected – my hope and appeal to all educational institutions and organizations is that we keep this innovation and constant change in mind and prepare our future generation accordingly.

With this hope that we can provide the best of opportunities and space to our children to explore and express their true self, I wish everyone good health and peace, and may the almighty bless everyone with the strength to successfully sail through all situations with a smile and a calm mind.

Best Wishes

**Dr. Ravi Pachamoothoo**

Chancellor

SRM University Delhi-NCR, Sonapat, Haryana



# MESSAGE FROM THE VICE - CHANCELLOR

SRM University Delhi-NCR was established in 2013 with the vision to create a premier academic environment at Rajiv Gandhi Education City for students all over the country. Ever since its inception, this university has persistently worked towards establishing a space for young minds to flourish and realize the zenith of their potential.

The world of academics is fast changing – it is not just books and bookish knowledge that matters, but appropriate application of the theoretical knowledge is the demand of the age, irrespective of the discipline one graduates from. It is, therefore, imperative that all higher education institutions stay abreast with the demands of changing times and situations and give the best to its students accordingly.

It has been a motto of SRM University Delhi-NCR to create a perfect harmony between theoretical and practical knowledge thereby providing the students with the opportunities where they do not feel unacquainted with and unaware of the latest demands of industry. The bygone year has been difficult and different for everyone, and the education sector also could not remain untouched by it. However, the SRMUH fraternity did not let any barriers of the previous year deter it from its mission. The world on one hand was stalled for a significant period of time, but on the other hand, many significant technological, social, political and commercial changes were taking place. It is important that the students are made aware of these changes so that once the wheels start to move freely and normally, the students are not left ignorant – hence, in spite of the obstructions, SRMUH continued in its path of imparting knowledge (both canonical and the most modern) seamlessly through online mode of teaching and interactions.

SRM University Delhi-NCR provides a state-of-the-art infrastructure where research at all levels is being promoted. The centres of innovation like C4D (Centre for Drug Design Discovery and Development) Siemens CoE (Siemens Centre of Excellence) and BOSCH are examples of the heights that SRMUH has scaled even during the pandemic.

Even amidst this difficult situation that all of us are going through, I wish all the young minds the very best and hope that they remain optimistic and work even harder to see their dreams come true! Stay safe, stay healthy and strive hard to transcend your potential!

Best Wishes

**Prof. (Dr.) Paramjit S. Jaswal**

Vice-Chancellor

SRM University Delhi-NCR, Sonapat, Haryana





The academic legacy of SRM Group of Institutions spanning over a period of five decades with **4 universities, 7 campuses, 22 institutions, more than 80,000 students and 5000 faculties** have paved the path for SRM Group to be celebrated as one of the leading academic organizations of this country.

# SRM GROUP

The foundation stone of SRM Group was laid down by our Hon'ble Founder Chancellor, Shri T.R. Paarivendhar in the year 1969 with the humble establishment of Florence Nightingale Primary School in Chennai which eventually developed to a higher secondary school in the year 1981. The burning desire to create a citadel for professional education, Shri T.R. Paarivendhar established Valliammai Polytechnic Institute, and within a span of a year, SRM Engineering College was founded in Kattankulathur. Since then, there was no turning back and the legacy of SRM Group with new university campuses in Amravati and Sikkim, and in the North, SRM University Delhi-NCR is a success story well-known and well-established.

## SRM VENTURES



# SRM UNIVERSITY DELHI-NCR, SONEPAT

The establishment of SRM University Campus at Rajiv Gandhi Education City, Delhi-NCR was the vision of the Hon'ble Chancellor, Shri Ravi Pachamoothoo to extend the phenomenal academic legacy of SRM Group of Institutions to this entire ecosystem of vibrant and innovative minds of this nation. In the year 2013, the foundation stone was laid and SRM University Delhi-NCR, or as it is fondly known – SRMUH started functioning as one of the first private universities at Rajiv Gandhi Education City, Delhi-NCR.

## VISION

SRM University Delhi-NCR, Sonapat, Haryana aims to emerge as a leading world-class university that creates and disseminates knowledge upholding the highest standards of instruction in the disciplines of Engineering & Technology, Management, Law, Humanities and Sciences. Along with academic excellence and skills, our curriculum imparts integrity and social sensitivity to adorn our graduates in such a way that they become truly compassionate and responsible citizens of this world.



**SRM University Delhi-NCR was the first campus in Rajiv Gandhi Education City to receive the approval of establishing a campus in this education-hub.**

## MISSION

- **To create a diverse community campus that inspires freedom and innovation**
- **Promote excellence in educational and skill development processes**
- **Continue to build productive international alliances**
- **Explore optimal development opportunities available to students and faculty**
- **Cultivate an exciting and rigorous research environment**





# INTERNATIONAL & INDUSTRY COLLABORATION



## PROFESSIONAL ACADEMIC MEMBERSHIP



The Institution of Engineers of India



India Concrete Institute



Indian Society for Technical Education



Member Institution of ACU

## INNOVATION CELL



MHRD Innovation Cell (Government of India)

# INTERNATIONAL ADVISORY BOARD



**Prof. Sir Tom Blundell**  
University of Cambridge, United Kingdom



**Prof. Simon Croft**  
LSHTM London, United Kingdom



**Prof. Prabhu Gupta**  
United Kingdom



**Dr. Vishal Mangalwadi**  
USA



**Prof. Alan P. Kozikowski**  
University of Illinois, Chicago



**Prof. William Ramses Bishai**  
Johns Hopkins Center for Tuberculosis Research, USA



**Prof. Akira Kaji**  
University of Pennsylvania, Philadelphia, USA



**Prof. Vicky Avery**  
Griffith University, Australia



**Prof. Kazuei Igarashi**  
Chiba University, Japan

# CENTRAL LIBRARY & LAW LIBRARY

The Central Library at SRM University Delhi-NCR was established in 2013 (since the inception of the university campus). The Law Library was established a year later in 2014. The Central Library is a repository of around 19364 books, 50 print journals and 6 online journals (across disciplines). In the Law Library, one would be exposed to around 3944 books, 16 print and 3 online journals. The Central Library also subscribes to at least 16 major Indian dailies and around 50 magazines. With a seating capacity of around 100 (at a time) at the Central Library and 50 (at a time) at the Law Library, the students are certainly going to be immensely benefitted with the facilities and reading atmosphere provided. Apart from the huge repository of books, journals (print and online), newspapers, magazines, research papers, the Central Library also provides its students and staff members with Reprographic facility, Book Scanner, Strip Binder, Spiral Binder and Lamination Machine.

## LIBRARY MEMBERSHIP IS AVAILABLE TO THE FOLLOWING:

- Members of the permanent teaching staff of the University on the production of appointment letter issued by the University
- Members of the teaching staff who are appointed on Ad hoc/ Temporary/ Leave vacancies on the production of appointment letter issued by the University
- Ph.D. Students on the rolls of the University, on the recommendation of the Chairman, Board of Research Studies: on payment of Rs.1000/- as refundable library security deposit and payment towards the annual University Library Development Fund as applicable from time to time to be deposited with the University at the time of registration as research scholar
- M.Phil. students on the rolls of the University on the recommendation of the Head of the Department concerned: on payment of Rs.100/- as refundable library security deposit and payment towards the annual University Library Development Fund as applicable from time to time to be deposited with the University at the time of admission
- Master degree level students registered in the University Departments/Faculties on recommendation of the Head of the Department/Board etc
- Ex-students of Master's course of the University with the recommendation of the Controller of Examinations and University Librarian: on payment of Rs. 2500/- as refundable library security deposit and payment towards annual University Library Development Fund as applicable from time to time to be deposited with the University. The period of annual subscription towards University Library Development Fund will be counted from the date he/she is enrolled. The renewal of membership will be done annually subject to the payment of University Library Development Fund
- Students at Bachelor degree level (Professional Courses) such as LL.B. etc. who are enrolled in the Faculties/ Departments of the University
- Students of Diploma/ Certificate Courses conducted by the Faculty/ Department of the University
- Non-teaching staff serving as permanent staff of the University on production of the appointment letter issued by the University
- Outsiders other than retired teaching and non-teaching staff of SRM University, engaged in research or higher studies with special permission of the University Librarian on payment of Rs. 500/- as monthly subscription or Rs.1500 /- as Quarterly subscription





# CENTRE FOR DRUG DESIGN DISCOVERY AND DEVELOPMENT (C4D)



In view of the magnitude of neglected and emerging diseases (such as bacterial, viral and parasitic diseases), a drug discovery centre, Centre for Drug Design Discovery and Development (C4D) is established at SRM University Delhi-NCR, Sonapat, Haryana. Now, it is proposed to take the initiative to establish the more infrastructural facilities for drug discovery, developing diagnostic kits and antimicrobial resistance and initiate the drug discovery projects with national and international collaborations. The international collaborations of C4D with world-renowned organizations/institutions/universities:

- University of Oxford
- University of Cambridge
- The London School of Hygiene and Tropical Medicine
- University of Southampton (UK)
- University of Birmingham (UK)
- Heriot-Watt University (UK)
- University of Edinburgh (UK)
- INSERM France, Harvard University (USA),
- Johns Hopkins University (USA)
- University of Sao Paulo, (Brazil)
- Skolkovo Institute of Science and Technology (Russia)
- Chinese Academy of Agricultural Sciences (China)
- University of Marburg (Germany)
- Universidade Estadual de Maringá Paraná (Brazil)
- Chang Gung University (Taiwan)
- Chiba University (Japan)
- University of KwaZulu-Natal (South Africa)
- Yangzhou University, Yangzhou
- Jiangsu (China)
- Weizmann Institute of Science (Israel)



## Objectives of the Centre for Drug Discovery and Development (C4D) at SRM University Delhi-NCR:

- Discovery of new drugs against neglected and emerging infectious diseases (**Tuberculosis, dengue, chikungunya, kala azar, malaria, meningitis, diarrheal diseases** and other neglected diseases caused by parasites, virus and Gram-negative pathogens)
- Synergy studies with existing drugs and formulation development as well as using nanotechnology to overcome toxicity issues
- Exploring natural products (marine and soil actinomycetes, etc.) as a source of antibiotics, and plant/ herbal extracts as source of treatment
- Discovering new chemical entities by using focused chemical library and Fragment Based Drug Discovery
- Repurposing of drugs for the improvement of treatment against Visceral Leishmaniasis with the aim of averting the emergence of PKDL
- New chemical entities/Biological entities to prevent/treat infectious diseases
- Surveillance of antimicrobial resistance (AMR) to monitor the emergence of multi-drug resistance in pathogens causing serious infections



**Prof. V. Samuel Raj**, Director C4D (centre) with **Prof. Ada Yonath**, the Nobel Laureate (left) and **Prof. Sir Tom Blundell** (right)

The Director of C4D, and also an active researcher in the field of antimicrobial resistance since 2005, Prof. V. Samuel Raj, has vast R&D experience in 2 major pharmaceutical industries, namely, Ranbaxy and Daiichi Sankyo. He has completed many new drug discovery projects to tackle Anti-Microbial Resistance (AMR). He established the drug discovery laboratory at SRM University Delhi-NCR with the aim of tackling the problem of AMR. He is an invited speaker for UK-India workshops/meetings on AMR. He is also the invited mentor and peer reviewer for AMR Sandpit meeting organized by DBT-UKRI, and reviewer of the projects on AMR (Indo-UK projects) and ICMR-Norway projects on AMR. To his credit, he has organized two major International Conferences on AMR where many world-renowned scientists including the Nobel Laureate, Prof. Ada Yonath participated and delivered lectures. Prof. V. Samuel Raj is one of the pioneers in the field of AMR research in India. It is noteworthy to mention here that he is the first scientist to report the ciprofloxacin resistance in the *N. meningitidis* in Delhi outbreak in 2005.

**Ongoing Research Projects (The Director as the Principal Investigator):**

■ **Genomics driven Dissection of Susceptibility and Drug Resistance to Pulmonary tuberculosis with a Geographical focus on NER.**

Funding Department: Department of Bio Technology  
Total Project Cost (In Rs.): 82,128,980.00 (It is a Consortium project)

■ **Management of multidrug resistant (MDR) pathogens causing Urinary Tract Infection**

Funding Department: Indian Council of Medical Research (ICMR)  
Total Project Cost (In Rs.): 4,960,000.00

■ **Re-purposing of drugs and nanoparticle approaches for the improvement of treatment against Visceral Leishmaniasis with the aim of averting the emergence of PKDL.**

Funding Department: Indian Council of Medical Research (ICMR)  
Total Project Cost (In Rs.): 8,400,000.00

# SRM – SIEMENS CENTRE OF EXCELLENCE (SSCOE)



At present, the revolution in modern Industrial systems is one of the most critical business and societal changes. Demand of automation has seen a surge due to urbanization and new regulatory bodies. There are various challenges in product development viz. range, capabilities, design and durability. Achieving all these parameters while maintaining the cost efficiency and without compromising on the safety standards is a major goal for production houses. This requires innovation and engineering application which was never been seen before.

Siemens, established in 1997 in Munich, Germany is considered as one of the foremost Product Lifecycle Management (PLM) software companies. Siemens PLM software offers simulation, analysis and testing solutions to all the aspects of automation. These software offers a comprehensive and integrated solution to all the problems of automation. Siemens PLM software has given industries an upper hand in electric vehicle development and viable solution to the problems faced in such electric vehicles by the industry and its consumers. Siemens has established itself as a market leader by helping the expansion of many industries across the world with 360° innovation ecosystem. Driven by a deep understanding of their customers' requirements, Siemens has used its industry software to implement solutions that has helped companies everywhere to attain sustainable competitive advantage over their competitors.

SRM University Delhi – NCR, Sonapat, Haryana joined hands with Siemens to launch “Siemens Centre of Excellence (COE)” to provide their students a platform wherein they can learn and use PLM software to enhance their knowledge. The Siemens COE will not only help students innovate but also turn their ideas into reality.

The mission of Siemens Centre of Excellence is to promote advancement and implementation of PLM, and advanced digital manufacturing-factory concepts through research and education partnership with the industry.

## Currently, the Siemens COE has the following labs:



These labs not only provide a widespread learning experience but also have all the tools and applications which are desired at industries to enhance automation.

The Product Design Lab gives an opportunity to engineers to develop new products. In addition to this, the students will be able to redesign already existing products in the market for better performance. Apart from this, the Process Digitalization Lab will help students to learn and help in easing the process of production of materials in the industry.

Furthermore, Siemens is a world leader in medical equipment. Establishing a BioTech specialized lab not only helps our students to learn about development of various biomedical equipment but also generates ideas to develop new machinery and improve already existing equipment available in the market.

The Simulation and Analysis Lab allows engineers to see into the future, predicting the consequence of any design change on the real- world performance of their products. Deployed effectively, it can be used to improve your design through multiple iterations, providing data to guide the design process from its earliest stages, through to production and beyond. Under Simulation and Analysis Lab, an engineering student can learn about Acoustic simulation, Fluid Dynamics simulation, Structural simulation and Thermal simulation.

In the CNC Controller Lab, students will be taught to develop G&M code of the turning and milling CNC machine. This will help students to design and develop product for mass production. In addition to this, a student will be able to improve the geometrical tolerance of a product.





# BOSCH

**Bosch has created new benchmarks in impacting the youth through skills-based Trade Apprenticeship training (based on the German Dual VET model) since 1961 at the iconic Bosch Vocational Center (BVC) in Bengaluru. BVC, which has produced over 5,000 apprentices so far, has been bestowed with the President of India's 'Best Establishment Award' 54 times.**

Continuing this tradition of imparting vocational training, Bosch launched its flagship short-term, job-oriented program "BRIDGE" in 2013, through which over 30,000 less-educated youth have been trained and placed across India through 466 BRIDGE Centers. BRIDGE addresses the need for establishing one's self-identity and self-confidence by placing them in an entry-level job in the organized or semi-organized sector. In 2015, Bosch also launched state-of-the-art "Artisan Training Centers" to create a pool of highly skilled artisans in the country, besides continuing to Train the Trainers (TTT) in technical and soft skills impartation.



## COLLABORATION WITH SRM UNIVERSITY DELHI-NCR, SONEPAT



**BOSCH**



**SRM**  
UNIVERSITY  
DELHI-NCR, SONEPAT

SRM University Delhi-NCR collaborated with Bosch and launched a unique programme, Industry-Academia Collaboration for Skill Development (IACSD). As a new dimension to strengthen our ongoing efforts on enhancing the skills with a vision to maximize our impact, **Industry-Academia Collaboration for Skill Development (IACSD)** initiative was launched by Bosch in 2019 and works with the following objectives

**The objective of IACSD is to work with like-minded universities in the following areas and prepare the students for their professional life:**

- |  |   |
|--|---|
| • Skill Development of Youth                             | • Capacity Building of Non-profit Sector (NGOs) |
| • Trainers Capacity Building                             | • MSME Capacity Building                        |
| • Developing Industry-ready Social Service Professionals |   |

# CENTER FOR INNOVATION, INCUBATION AND ENTREPRENEURSHIP (CIIE)

SRM University Delhi NCR, Sonapat has an established Center of Innovation, Incubation and Entrepreneurship (CIIE) where the young minds are nurtured to be innovators and entrepreneurs. CIIE is an MHRD approved Institute Innovation Cell (IC201912379). CIIE aims to emerge as a world class hub for promoting innovations and entrepreneurship that enables individuals towards establishing start-ups which in turn will support sustainable development. The centre strives towards playing a key role in nurturing the future leaders in the field of engineering, technology, arts, science, management and law.

At CIIE we provide an atmosphere to the students for learning by doing on some of the most advanced technologies. Students are trained from the basic level of technologies to an advanced level by providing necessary technical support, space, monitoring, training, networking and other benefits. Students' project ideas are funded and are monitored at different levels based on their performance. Technical fests and project based competitions are held at campus level to promote the competitive spirit among the students. The selected students are encouraged to participate at national / state level competitions such as hackathons, innovation summits and such other events. These events render a firsthand experience in entrepreneurship, promotes innovative thinking and provides comprehensive and integrated range of support to the students' career. Furthermore, the Incubation Center also organizes technical competitions such as Science Olympiad for school and college students which facilitates innovative thinking among young learners.



Science Exhibition held at Central University of Haryana, Mahendragarh



SMART INDIA HACKATHON 2022



Congratulations!

**Team Hex-Alliance**

for being selected in  
Smart India Hackathon (SIH) 2022



Shryesth Pandey  
(2<sup>nd</sup> Year)



Shivanshi Singh  
(2<sup>nd</sup> Year)



Abdul Rakheeb  
(3<sup>rd</sup> Year)



Ayush Patel  
(3<sup>rd</sup> Year)



Divya Singh  
(3<sup>rd</sup> Year)



Vaibhav Krishna  
(3<sup>rd</sup> Year)

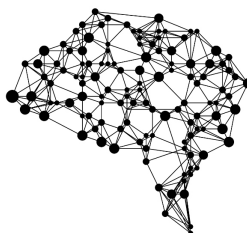
ORGANISERS



Partner Network

Winners of Smart India Hackathon 2022





Student's presentation at Innovation Punjab Summit, Chandigarh



Remote Control Car Workshop



RC Car Workshop and Arduino Workshop

# Congratulations Winners!

SRMUH and INCUBATION center delivers a hearty congratulations to the Team SRM for WINNING THE NATIONALS in TOYCATHON 2021

B. Tech 4<sup>th</sup> Yr.  
Vidarsh Kumar

B. Tech 4<sup>th</sup> Yr.  
Umish Zangar

B. Tech 1<sup>st</sup> Yr.  
Shreyash Pandey

B. Tech 4<sup>th</sup> Yr.  
Bhargava Singh

B. Tech 4<sup>th</sup> Yr.  
Madhush Chagrab

Winners of Toycathon 2021



Web Development and App Development: Flutter





# DEPARTMENT OF BIOMEDICAL ENGINEERING

Biomedical Engineering (BME) brings together concepts and skills from life sciences, physical sciences, medicine and engineering in order to model physiological systems. Biomedical Engineering offers a plethora of scopes in India and Abroad in areas, such as Tissue Engineering and Biomaterials, Biomechanics, Biomedical Imaging, Biomedical Electronics, Neuro-engineering, Cardiovascular Engineering, and Robotic Surgeries. Our mission as Biomedical Engineers is to transfer biomedical engineering research into healthcare applications across the globe. A BME student will acquire the necessary skills and knowledge to understand the impact of engineering solutions in a global, economic, environmental, and societal context. They will also obtain the ability to implement the techniques, skills and modern engineering tools necessary for human welfare. The Department of Biomedical Engineering was established in 2014. We have undergraduate (B.Tech.) program in Biomedical Engineering stream. At the postgraduate level, we offer M.Tech. and Ph.D. degrees in the interdisciplinary areas.

The department of Biomedical Engineering is where the boundaries between disciplines fade – it is a department where students, professionals, scientists and experts from across the disciplines of

biological sciences and engineering come together to create technology that has the capacity to create a safer and a better future for human civilization.

This department is focused on inducing the knowledge and skills required by its practitioners to efficiently apply scientific knowledge and engineering principles by developing biomedical technology needed for the upgrade and maintenance of the national/international healthcare system. By converging the engineering expertise in analytical and experimental methods to biological and medical sciences, the department of Biomedical Engineering aims at unveiling the unseen in biology and innovations in technology that can be translated to clinical health care – this department at SRM University Delhi-NCR is renowned for defining excellence in research and education.

Programme	Type	Duration	Tuition Fee (Annual)
B.Tech. - Biomedical Engineering (BME)	UG	4 years	1,75,000/-

## CAREER PATHS

Biomedical engineering is a booming career field as health and technology are coming together to revolutionize the field of medicine. Being a fusion of healthcare and engineering, the two areas of study that are consistently praised for offering the best job prospects for students, students get placed in both India and abroad in both academia and industry.

CORE	NON-CORE
• Manufacturing Engineer	• Business Analyst
• Software Engineer	• Operation Manager
• Quality Engineer	• Marketing manager
• Research Scientist	• Data analyst



FOR DETAILED  
INFORMATION  
SCAN CODE



# DEPARTMENT OF CIVIL ENGINEERING

The Department of Civil Engineering pulls out all stops to create outstanding engineers - with advanced teaching techniques and learning aids for undergraduate students and state-of-the-art research facilities for postgraduate students and doctoral candidates. Students are not only made experts in technical aspects but also in interpersonal skills - a vital ingredient to excel in the fast-paced world.

The Civil Engineering Department at SRM University Delhi-NCR is a professional member of Indian Concrete Institute (ICI) and has University's first student chapter which provides its students a platform to come together with eminent industry personalities, scientists, academicians and consultants.

One of the key highlights of this course is its curriculum which is not just at par with the IITs and NITs but also relevant from industry perspective; apart from the curriculum, regular industry and research lab visits, survey camps in hilly areas, internship programmes, motivation to take up projects and constant interaction with industry experts through seminars and webinars are some of the aspects that certainly gives the students of civil engineering at SRM University Delhi-NCR an

edge over others. The Civil Engineering Department is also an IIRS (Indian Institute of Remote Sensing) (ISRO) Outreach Nodal Centre for IIRS (ISRO) online classes.

There's a world of opportunity for all Civil Engineering graduates, especially post Covid-19, the world is looking at India as major industries have planned to shift their plants/offices from China. Therefore, government will be relying on the Civil engineers and Infrastructure Industry to cope with this sudden requirement of well-trained and qualified Civil Engineers.

Programme	Type	Duration	Tuition Fee (Annual)
B.Tech. - Civil Engineering (CE)	UG	4 years	1,75,000/-
M.Tech. - Civil (Structural Engineering)	PG	2 years	1,00,000/-
Ph.D. - Civil Engineering	-	-	1,50,000/-

## CAREER PATHS

The knowledge and skills you can gain as a student of civil engineering serve as an excellent foundation for a variety of careers, including (but not limited to):

- Project Manager
  - Site Engineer
  - Building Inspector
  - Building Services Engineer
  - Structural Engineer
- Design Engineer
  - Civil Engineering Technologist
  - Consultant
  - Quality Inspector
  - RITES / MES / Railways / CPWD / PWD / ES



FOR DETAILED  
INFORMATION  
SCAN CODE



# DEPARTMENT OF COMPUTER SCIENCE & ENGINEERING

The department of Computer Science & Engineering is renowned for cutting edge research and for imparting state-of-the-art education. We attract some of the excellent students and faculty. The department of Computer Science & Engineering imparts international level training and research. The department provides high standard computing facilities to the students. It also promotes active industry-department affiliation by finding common areas of interest and taking part in research projects and consultancy services. Our research exists in the areas of systems, software, networking, databases, security, and foundations of computer science, artificial intelligence, robotics, and scientific computing. Besides basic research, interdisciplinary work on applications that stimulate basic research has been undertaken under department of Computer Science & Engineering. Our department is designed in such a manner that the program orients students towards the pragmatic aspects of computer science and provides learning and practices to make them proficient computing professionals. The industry collaborations with FutureSkills, NASSCOM, IBM, DevOps and TCS provides a world of opportunity to its students where the learners get the chance to interact with industry experts and eminent academicians from a very early stage of their learning process and career.

Furthermore, excellent infrastructure and healthy learning atmosphere in terms of ultra-modern computer laboratories like Apple Lab, IBM Emerging Technologies lab like Data Science & Artificial Intelligence, and SPARKS Coding Club and the Soft Skill & Technical Skill development programs for students in coordination with Training & Placement Department adds a certain edge to the learners' level of confidence, entrepreneurial and leadership skills.

Programme	Type	Duration	Tuition Fee (Annual)
B.Tech. - Computer Science and Engineering (CSE)	UG	4 years	2,00,000/-
B.Tech.- Computer Science & Engineering with specialization in Data Science & Artificial Intelligence (in association with IBM)	UG	4 years	2,50,000/-
B.Tech. - Computer Science & Engineering with specialization in Blockchain & IoT (in association with IBM)	UG	4 years	2,50,000/-
B.Tech. - Computer Science & Engineering with specialization in Cloud Engineering and DevOps Automation (in association with Xebia)	UG	4 years	2,50,000/-
B.Tech. - Computer Science & Business Systems (in association with TCS)	UG	4 years	2,50,000/-
M.Tech. - Computer Science and Engineering (Big Data Analytics)	PG	2 years	1,00,000/-
Ph.D. - Computer Science and Engineering (CSE)	-	-	1,50,000/-

## CAREER PATHS

Engineering in computer science is one of the essential parts of education, and it is a fact, no doubt. Computer Science is one of the necessary and accessible career paths. It is also the most common one that the students follow, so we can say that it's a good option ahead. However, students still confuse themselves about what to do after graduation from engineering in computer science.

- Big Data Engineer
  - Machine Learning Engineer
  - Data Scientist
  - Data Analyst
  - Blockchain Developer/Engineer
- Software Developer
  - Computer Network Architect
  - Database Administrator
  - Information Security Analyst
  - Full Stack Developer



FOR DETAILED  
INFORMATION  
SCAN CODE





# DEPARTMENT OF ELECTRONICS AND COMMUNICATION ENGINEERING

The Department of Electronics and Communication Engineering was established in 2013. The department offers B.Tech., M.Tech. and PhD courses. Degree program; at the postgraduate level, we offer M.Tech and Ph.D. degrees. The department maintains active research groups for carrying out collaborative and interdisciplinary research.

We have state of the art lab facilities to support our academic programs and research. Devices designed by Electronic Engineers feature in all aspects of modern life, including computers, mobile phones, robotics, internet, digital television, satellites, aerospace, medical scanners, security systems, IOT etc. The department faculties are committed to teach students the fundamental concepts and also the latest trends to enhance and strengthen the learning process. The students are also taught critical thinking and problem-solving skills so that they can easily take the next step, that is, their professional lives with confidence. In addition to classroom teaching, the students are guided and motivated to practically implement the principles learnt in classrooms through experimentations in the laboratories on latest technologies.

The department provide healthy environment to students and faculties to carry out inter-department collaborative research in areas like VLSI Design, internet of things, robotics, etc. Students are provided internship facility in organizations like BSNL, DRDO, ECIL etc. The department conducts various workshops, expert talks and additional training programs on recent trends in Electronics and Communication Engineering in collaboration with industries for the benefit of faculty and students. The student projects are conducted in-house with the guidance of department faculty and industrial trainers. Having undergone such a robust academic programme under the supervision of highest quality faculty members, we are sure that all students of the department will be capable of visualizing, planning and developing big projects of commercial and research interests in their respective field of expertise.

Programme	Type	Duration	Tuition Fee (Annual)
B.Tech. - Electronics & Communication Engineering (ECE)	UG	4 years	1,75,000/-
M.Tech. - Electronics & Communication (Microelectronics and VLSI Design )	PG	2 years	1,00,000/-
Ph.D. - Electronics & Communication Engineering	-	-	1,50,000/-

## CAREER PATHS

In modern times, life without gadgets will be next to impossible. All thanks to engineers! Electronics & Communication Engineering has become the essence in any field of the professional world. Its scope is vast and emerging day by day. This course majorly focuses on networks of communication with the study of electronics.

- DRDO,ISRO, BHEL, GAIL and other top public sectors
- VLSI Design Engineering
- IoT Specialized Engineering
- FPGA Designer
- Network Planning Engineer and Cyber Security
- Antenna Design Engineer
- Machine Learning and Artificial Intelligence
- Industrial Automation



FOR DETAILED  
INFORMATION  
SCAN CODE



# DEPARTMENT OF ELECTRICAL AND ELECTRONICS ENGINEERING

Charge your future with a Bachelor of Technology in Electrical and Electronics Engineering at SRM University, Delhi-NCR, Sonapat. The Electrical & Electronics Engineering is a dynamic and rapidly growing field that brings various career opportunities in dual areas such as electric power generation, transmission, distributions, switch gears & circuits, robotics & control, computer hardware and much more. As an electrical & electronics engineer, an individual deals with the power generation, conversion, transmission, distribution, usage of electrical power etc. He/she also engages in designing end use devices like electric motors, machinery and ignition systems used in industry. This branch of engineering offers excellent career opportunities for the students. As an Electrical & Electronics Engineer, an individual can self-start his career in the fields of drawings and specification, design, development and implementation of products or systems, research to create prototypes of new products and usages. These professionals are required by many industries in large numbers, for instance, television, computer, fans, motors, refrigerators, consumer durables etc. They also get employment in steel plant, hydroelectric power plants, nuclear power plants, thermal power plants and wherever electricity is generated, transmitted and distributed.

The Department of Electrical and Electronics Engineering at SRMUH believes in the multidimensional growth of all students. Industrial visits and dedicated semester internships which assist the students in smooth transition from academic life to work life is a regular feature of our department. The department conducts various programs such as workshops, live projects, semester abroad program, technical training, soft skill training, guest lectures and seminars by experts from industry and academic background for constant knowledge up-gradation of staff and students. The department has extensive partnerships and collaborations with foreign universities for technology up-gradation. This activity helps to stay abreast with the latest technologies in the field of electrical engineering. Choice Based Credit System (CBCS) curriculum is curated for B. Tech EEE students to earn 188 credits at par with European education system. Various cutting-edge laboratories & facilities offered to students are

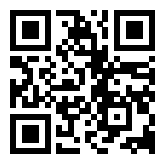
- Electrical Machines Lab
  - Electric Circuits Lab
  - Digital System Design Lab
  - Electronic Devices and Circuits Lab
- Measurements & Control Systems Lab
  - Linear Integrated Circuits Lab
  - Processors and Controllers Lab
  - Power Electronics Lab
- Electric Drive Simulation Laboratory
  - Power System Simulation Laboratory
  - Renewable Energy Simulation Laboratory
  - Project Lab

Programme	Type	Duration	Tuition Fee (Annual)
B.Tech. - Electrical & Electronics Engineering (EEE)	UG	4 years	1,75,000/-

## CAREER PATHS

Rapid technological change and the global economy's reliance on energy and innovation is seeing growing demand for electrical engineers with the highest skill and knowledge sets. These engineers will be at the forefront of future shaping, and play an important role. Because tomorrow matters.

- Junior Engineer
  - Energy Engineer
  - Energy Consultant
  - Control and Instrumentation Engineer
  - Project Managers
- Machine Design Engineer
  - Sustainable Product Design Engineer
  - Automobile Engineer
  - Network Engineer
  - IoT Specialized Engineer
- Manufacturing Systems Engineer
  - Electrical Weapons Engineer
  - Senior Equipment Engineer
  - Safety Engineer
  - Aerospace Engineer



FOR DETAILED  
INFORMATION  
SCAN CODE



# DEPARTMENT OF MECHANICAL ENGINEERING

The Department of Mechanical Engineering was established in 2013. It offers undergraduate and postgraduate programmes. The department maintains active research groups for carrying out collaborative and interdisciplinary research. In addition to classroom teaching, the students are guided and motivated to practically implement the principles learnt in classrooms through experimentations in the state-of-the-art laboratories. The Department of Mechanical Engineering strives to provide healthy environment to the students and its faculty members to carry out inter-departmental collaborative research in areas like Material Science, Manufacturing, Engineering Design, Mechatronics etc. Students are provided internship facility in organizations like NTPC, DRDO, and Maruti Suzuki etc. Furthermore, the student projects are conducted in-house with the guidance of department teachers and industrial trainers.

The department has several industry collaborations and have regular invited lectures/ webinar/ workshops conducted by the resource persons from the industry – in relation to industry-academia interactions, Maruti Suzuki, Panasonic India, Siemens India are a few names to mention.

The department has a Centre of Excellence inside the university campus, that is, Siemens Centre of Excellence (Siemens CoE) which was established in the year 2020. The state-of-the-art labs at Siemens CoE – Product digitalization, Process digitalization, Production Planning, BioTech Specialised, Simulation and Analysis, and CNC Controller provides a great edge to the students. The Siemens CoE also puts SRM University Delhi-NCR amongst the few technical institutes/universities (IIT's / NIT's and very few private institutes across India) which have Siemens COE.

The well-equipped laboratories dedicated to Strength of Materials, Fluid Mechanics, Manufacturing Technology, IC Engines, Mechanisms and Machines, CAD/CAM (Software like CATIA, AutoCAD), research-driven, industry-oriented dynamic curriculum, experiential learning, regular internship programmes and periodical activities under technical clubs and societies to enrich subject knowledge and opportunities to interact with eminent academicians and industry experts makes the Mechanical Engineering course at SRM University Delhi-NCR a much sought after programme.

Programme	Type	Duration	Tuition Fee (Annual)
B.Tech. - Mechanical Engineering (ME)	UG	4 years	1,75,000/-
M.Tech. - Production Engineering	PG	2 years	1,00,000/-
Ph.D. - Mechanical Engineering (ME)	-	-	1,50,000/-

## CAREER PATHS

The knowledge and skills you can gain as a student of mechanical engineering serve as an excellent foundation for a variety of careers, including (but not limited to):

- Managers in Public Sector Company
  - Project Engineer
  - Automotive Engineer
  - Managers in Public Sector Company
  - Entrepreneurs
- Manufacturing Engineer
  - Design Engineer
  - Development Engineer
  - Research
  - Vendor Development, Purchase and Supply Chain



FOR DETAILED  
INFORMATION  
SCAN CODE





# DEPARTMENT OF AGRICULTURE

India is an agricultural country. Agriculture and its allied activities act as the main source of livelihood for more than 80% population of rural India. It provides employment to approximately 52% of labour. Its contribution to Gross Domestic product (GDP) is between 14 to 15%. At the time of Independence, India faced food grain shortage, however, India has achieved spectacular growth in agriculture sector since 1966. India today is self-sufficient in most of the food grain production despite population increase. The food grain production of India increased from 51 million tons in 1950 to about record 273.38 million tons in 2016-17. This growth in itself represents a remarkable achievement in the history of world agriculture. India has achieved significant growth in agriculture, milk, fish, oilseeds, fruits and vegetables owing to green, white, blue and yellow revolutions. All these revolutions have brought prosperity to the farmers. Many factors are responsible for these achievement viz conducive government policies, receptivity of the farmers and also establishment of higher agricultural education institutions. In order to sustain, diversify and realize the potential of agriculture sectors, it is necessary to develop skilled human resources. Agricultural human resource development is a continuous process undertaken by agricultural universities. Agricultural universities impart education in the various disciplines of

agriculture viz., Agriculture, Agricultural Engineering, Forestry, Horticulture, Veterinary and Animal Husbandry, Dairy Science, Food Technology, Fisheries Science, Agriculture Information Technology, Agri Business Management etc. It imparts education at the level of diploma, degree, masters and doctoral level. SRMUH has established the Department of Agriculture under the Faculty of Science Humanities to train the students in the field of agriculture.

Programme	Type	Duration	Tuition Fee (Annual)
B.Sc. - Agriculture Science (Hons.)	UG	4 years	1,50,000/-

## CAREER PATHS

Our graduates will be able to apply for placements relevant to their interests and aspirations, and may choose to link these to their choice of electives in the final year or proposed dissertation topic.

- Agriculture officer
  - Farm or Plantation Manager
  - Agricultural Research Scientist
  - Agriculture Development Officers
  - Agriculture Technician
- Practicing progressive agriculturists
  - Business Development Executive
  - Marketing Executive



FOR DETAILED  
INFORMATION  
SCAN CODE



# DEPARTMENT OF BIOTECHNOLOGY

The Department of Biotechnology was established in 2018 with the mission to make its students technically strong and coherently aware of the domain of their study. It is one of the most vibrant departments of SRM University Delhi-NCR, Sonapat (Haryana). The Department has well-equipped laboratories to provide hands-on training and research exposure to the students.

We have state of the art lab facilities along with specialized Centre for Drug, Discovery, Designing & Development (C4D) unit to support our academic courses and research areas. Our department is having active research groups for carrying out collaborative and interdisciplinary research.

The department has nationally and internationally experienced and trained faculty to impart knowledge in the various specialized fields of Biotechnology. The faculties are assigned to teach our students the fundamental perceptions and advance level of learning. In addition to classroom teaching, the students are directed and instructed to practically implement the principles learnt in classrooms through various laboratory exercises & experiments. Along with flip classes, the students are also taught critical thinking and problem-solving skills.

Students are provided project training program in top organizations like DRDO and CSIR. The department conducts various workshops, expert talks and training programs. Students are motivated to actively participate in International/National seminars, symposiums, conferences and workshops.

Programme	Type	Duration	Tuition Fee (Annual)
M.Sc. - Biotechnology	PG	2 years	60,000/-
Ph.D. - Biotechnology	-	-	1,50,000/-

## CAREER PATHS

Biotechnology, as the name implies, is a science that combines biology and technology for the benefit of mankind. It is a type of technology that employs biological systems to create a product with a particular application.

- Medical scientists
  - Medical and Clinical Lab Technologists
  - Biochemists and Biophysicists
  - Epidemiologists
  - Research Scientist
- Genetic Counsellor
  - Professor
  - Medical Writer (Technical Copy Writing)
  - Science Journalist
  - Data Science & Big Data Analyst



FOR DETAILED  
INFORMATION  
SCAN CODE



# DEPARTMENT OF CHEMISTRY

Department of Chemistry was established in July 2013. The department is focused on teaching we well as conducting high quality research (basic and multidisciplinary) in the frontier areas of chemistry and its interface with allied disciplines. The department has basic laboratory facilities and is well equipped with state-of-the-art research facilities. The Department has well qualified teachers with excellent track record in research and teaching. The Department has collaboration with various national and international laboratories and institutions. The Department is offering BSc (Hons), M.Sc. and Ph.D. program along with the interdisciplinary programs. We have choice-based credit system (CBCS) with flexible and carrier-oriented curriculum and syllabus.

Some of the key highlights of the undergraduate or the post-graduate programme in Chemistry at SRM University Delhi-NCR are the Choice Based Credit System as per New Education Policy & Industry 4.0, experiential and experimental learning through live projects, course-specific practical, industrial/academic visits and summer internship programs. Also, the Skill Enhancement Courses and hands-on training on instruments to equip students for the current industrial requirements and entrepreneurship training with the Incubation Centre and Centers of

Excellence in the university campus would certainly assist the students to stand apart and establish themselves in this competitive era.

The Department of Chemistry is well-equipped with highly qualified faculty members from universities and institutions of national and international repute, state-of-the-art laboratories, national and international collaborations with institutions such as Delhi Technological Institute, VP Chest Institute, University of Delhi, Bhabha Atomic Research Centre, Punjab Technical University, and Department of Pharmacology and Physiology, University of Rome, Italy, University of Reading, UK. In addition to constant interactions with eminent speakers from industries through seminars, webinar/talk on recent development and technologies, the department regularly provides opportunities to students for industrial visits, short-term trainings and internship with various industries like-Sun Pharma, Jubilant Chemicals, Merck, Teva India.

Programme	Type	Duration	Tuition Fee (Annual)
B.Sc. - Chemistry (Hons.)	UG	3 years	55,000/-
M.Sc. - Chemistry	PG	2 years	60,000/-
Ph.D. - Chemistry	-	-	1,50,000/-

## CAREER PATHS

Chemicals are used in almost every field such as medicines, food products, textiles, agriculture, plastics, paints, electronics and even in construction activities. This creates many opportunities for the chemistry graduates and postgraduates in diverse fields.

- |                                      |                      |                             |
|--------------------------------------|----------------------|-----------------------------|
| • Research Assistant                 | • Production Chemist | • Teaching                  |
| • Analytical Chemist                 | • Production Officer | • Scientist Grade           |
| • Biomedical Chemist                 | • Quality Controller | • Post-Doctoral Fellowships |
| • Soil Chemist in Govt./Private Labs | • R&D Director       | • Research Associates       |
| • Materials Technologist             | • Patent Officer     | • Legal Patent Officer      |

and many more...



FOR DETAILED  
INFORMATION  
SCAN CODE





# DEPARTMENT OF COMPUTER SCIENCE

The Department of Computer Science was established in the year 2017. The Department provides an outstanding research environment complemented by excellence in teaching. Ever since its inception, the department has been a pioneering academic centre for higher education, research, and innovation in key areas of Computer Science. The department strives to shape outstanding computer professionals with values to reshape nation's destiny. The training imparted aims to prepare young minds for the challenging opportunities in the IT industry with a global awareness rooted in the Indian soil, nourished and supported by experts in the field.

The industry collaborations with FutureSkills, NASSCOM, IBM, DevOps and TCS provides a world of opportunity to its students where the learners get the chance to interact with industry experts and eminent academicians from a very early stage of their learning process and career. The strong mentor-mentee system, excellent academic and placement activities, 24x7 availability and accessibility to the state-of-the-art Data Centre with high end rack servers and routers, additional Virtual Lab Classes, Live Classes, Tutorials and Certificate courses through eminent academicians and industry experts and Project Based Study makes an undergraduate and post-

graduate course in Computer Science from SRM University Delhi-NCR a much sought after programme. Furthermore, excellent infrastructure and healthy learning atmosphere in terms of ultra-modern computer laboratories like Apple Lab, IBM Emerging Technologies lab like Data Science & Artificial Intelligence, and SPARKS Coding Club and the Soft Skill & Technical Skill development programs for students in coordination with Training & Placement Department adds a certain edge to the learners' level of confidence, entrepreneurial and leadership skills.

Programme	Type	Duration	Tuition Fee (Annual)
B.C.A.	UG	3 years	70,000/-
M.C.A.	PG	2 years	75,000/-
Ph.D.- Computer Science	-	-	1,50,000/-

## CAREER PATHS

With infinite opportunities to grab after a successful completion of an undergraduate (BCA) and/or postgraduate programme (MCA) in Computer Science, the following are some of the paths where one can explore the peak of one's potential:

- |                      |                          |                        |
|----------------------|--------------------------|------------------------|
| • Software Developer | • Business Analyst       | • Manual Tester        |
| • Hardware Engineer  | • Technical Writer       | • Trouble-shooter      |
| • Database Engineer  | • Web Designer/Developer | • Network Engineer     |
| • Data Scientist     | • IT Architect           | • Social Media Manager |
| • Cloud Architect    | • Software Consultant    | • Ethical Hacker       |

and many more...



FOR DETAILED  
INFORMATION  
SCAN CODE



# DEPARTMENT OF ENVIRONMENTAL SCIENCES

Environmental Science has developed as the interdisciplinary subject to understand the physical chemical and biological processes of natural system. The Environmental science program provides an understanding and skill to address the environmental issues in scientific manner. Department of Environmental Sciences at SRM University Delhi-NCR, Sonapat, Haryana (SRMUH) was established with the clear objective of furthering cutting edge interdisciplinary research in specific fields. Research on Environmental Impact Studies, Environmental Health, Climate Change and Waste management is in progress. The Department has been actively identifying and introducing various courses linking environmental issues and sustainable development with technology and business. These introductory courses are being taught to the students of technology and management at SRMUH since the past few academic years and we are keen to introduce post graduate courses on environmental sciences.

Through the extensive lectures, case studies and projects, students will be able to integrate environmental dimensions into business management. This integration will enable them to adopt a practical outlook to take holistic decisions for managing their business sustainably. As the environmental problems clash with the technology and development, most of the MNCs

prefer recruiting people who are environmentally educated. We hope to set the stage for inculcating environmentally conscious professionalism into technologists, managers and entrepreneurs of India.

Programme	Type	Duration	Tuition Fee (Annual)
M.Sc. - Environmental Science	PG	2 years	60,000/-
Ph.D. - Environmental Science	-	-	1,50,000/-

## CAREER PATHS

Environmental Science has developed as the interdisciplinary subject to understand the physical, chemical and biological processes of natural system. The Environmental science program provides an understanding and skill to address the environmental issues in scientific manner.

- Industries (Engineers, Laboratory professional)
  - Academia (Academic jobs)
  - Research and Development (Scientist, Technical Professional)
  - Consultancy (EIA expert, Environmental Auditor)
  - International agencies (UNEP, World Bank etc.)
- NGOs
  - Wildlife Conservator
  - Entrepreneurs
  - Health & Safety Officer



FOR DETAILED  
INFORMATION  
SCAN CODE

and many more...



# DEPARTMENT OF FOOD TECHNOLOGY

Department of Food Technology is introduced in the current Academic Year 2021-22 under the Faculty of Science & Humanities. The Indian food industry is poised for huge growth increasing its contribution to world food trade every year. It has emerged as the highest growth and profit section due to its immense potential in food processing industry. Global giants are investing billions of dollars in India in this sector. Indian government also aims to set up new processing units, with a strong focus on supply chain infrastructure. Food technology is the application of food science to the selection, preservation, processing, packaging, distribution, and use of safe food.

Related fields include analytical chemistry, biotechnology, engineering, nutrition, quality control, and food safety management. A team of dedicated, well qualified and experienced teachers teach, guide and motivate the students to excel and come out with flying colors. A student graduating from this department has opportunities in industries, multinational companies, hospitality outlets and also as entrepreneurs. They also have the privilege to go abroad for higher studies, management and research.

Programme	Type	Duration	Tuition Fee (Annual)
B.Sc. - Food Technology (Hons.)	UG	3 years	55,000/-

## CAREER PATHS

After the successful completion of BSc- Food Technology the students can associate with different organizations and work in different departments as per their interest.

- APEDA, MPEDA, NABARD, NAFED, MAFED, BARC
  - Central Food Laboratories
  - State Government: Food Safety Officer/Food Inspector
  - CFTRI, IIFPT, DFRL, NIFTEM – Scientist/Asst. Professor
  - ICAR (ARS) Scientist
- Food Technologist
  - Food Scientists
  - Production Managers
  - Food Packaging Managers
  - Research and Development Personnel

and many more...



FOR DETAILED  
INFORMATION  
SCAN CODE





# HUMANITIES AND SOCIAL SCIENCES

Humanities and Social Sciences was established at the very inception of the university in 2013 with the Department of English as one of the first branches from Humanities. In the year 2019, three new departments/courses, namely Economics, Political Science and Psychology were added. The vision of all the four departments in Humanities and Social Sciences, that is, English, Economics, Political Science and Psychology is to nurture the love for knowledge and an understanding of the current society/world through an interdisciplinary engagement, and also, to develop an academic ecosystem which is cohesive and inclusive so as to promote high quality and sustainable academic delivery. The various departments of Humanities are committed towards adopting and implementing interdisciplinary, multidisciplinary and transdisciplinary approaches to teaching, learning and research. Our faculty members are committed to an interdisciplinary approach to knowledge, evident in their involvement in research programs such as Ethnic Studies, Women's Studies, Film Studies, International Relations, Public Policy, Indian Government and Politics, Environmental Studies, Mental Health Psychology, Cognitive Psychology, Applied Psychology, Positive Psychology, Gender Psychology, Neuro-Psychology, Counselling and Clinical Psychology, Statistics, Microeconomics and so on.

Some of the key highlights of the undergraduate or the post-graduate programmes in any of the humanities courses are the Choice Based Credit System as per New Education Policy & Industry 4.0, experiential and experimental learning through live projects, and summer internship programs. Also, the Skill and Ability Enhancement Courses would certainly assist the students to stand apart and establish themselves in this competitive era. The Students' club, "Chhaap" is one of its newest and creative additions which not just focusses on interpersonal interaction, but also strives to give an opportunity to students to hone their creative, analytic, leadership and entrepreneurial skills.

Programme	Type	Duration	Tuition Fee (Annual)
B.A. - English (Hons.)	UG	3 years	55,000/-
B.A. - Economics (Hons.)	UG	3 years	55,000/-
B.A. - Political Science (Hons.)	UG	3 years	55,000/-
B.A. - Psychology (Hons.)	UG	3 years	55,000/-
M.A. - English	PG	2 years	60,000/-
Ph.D. - English	-	-	1,50,000/-

## CAREER PATHS

The rigorous and interesting course work during undergraduate and postgraduate programmes in either English, Political Science, Psychology or Economics enables the learners to develop an analytical and critical bent of mind and also achieve a greater world view by the virtue of the myriad literary/critical/analytical works and theories that he/she reads during this period.

- Media Analysts
  - Lobbyist
  - Public Relation Officers
  - Journalism – Print, Web, Television
  - Educational Psychologists
- Teaching
  - Copywriters & Scriptwriters
  - Political Consultancies
  - Political Analyst
  - Counselling Psychologists
- Content Writers and Blogging
  - Data Analyst
  - Policy-Maker
  - Actuarial Scientist
  - Indian Economic Services



FOR DETAILED  
INFORMATION  
SCAN CODE

and many more...



# DEPARTMENT OF MATHEMATICS

Mathematics is a language of science and technology. It plays a major role in shaping today's world. From data scientists to engineers and economists to statisticians, a solid background in mathematics is absolutely needed. A degree in Mathematics trains the students to apply, evaluate and adapt existing problem-solving techniques. Also, to develop new mathematical models to solve problems stemming from natural, technological and financial phenomena.

The Department is offer B.Sc. (H) Mathematics, B.Sc. (H) Statistics, M.Sc. Mathematics and Ph.D. programmes. The faculty members of the department have expertise in Pure Mathematics, Applied Mathematics, Statistics and Computing. Young and dynamic faculty members are well familiar with mathematical and statistical software like Mathematica, Minitab, SPSS and R etc. We are one of the organs to all other neighbouring faculties such as Engineering, Science and Humanities, Management and Commerce. The Department of Mathematics is a fully equipped Department with a separate MATLAB. The curriculum of Undergraduate and Postgraduate courses are designed to equip students to qualify competitive exams such as GATE, NET, PSU's and such others.

Programme	Type	Duration	Tuition Fee (Annual)
B.Sc. - Mathematics (Hons.)	UG	3 years	55,000/-
B.Sc. - Statistics (Hons.)	UG	3 years	55,000/-
M.Sc. - Mathematics	PG	2 years	60,000/-
Ph.D. - Mathematics	-	-	1,50,000/-

## CAREER PATHS

A degree in Mathematics trains the student to apply, evaluate and adapt existing problem-solving techniques and also, to develop new mathematical models to solve problems stemming from natural, technological and financial phenomena.

- **Mathematical Experts**
- **Accountant, Actuary, Technician, Economist and Market Researcher**
- **Government Sectors like Indian Space Research Organization (ISRO), Defense Research and Development Organization, (DRDO), National Aeronautical Research (NAL) etc.**
- **Career in Armed Forces, Civil Services, Banks, Government Sector and Research**



FOR DETAILED  
INFORMATION  
SCAN CODE

and many more...



# DEPARTMENT OF MICROBIOLOGY

The Department of Microbiology was established in 2018 and is one of the most vibrant departments at SRM University Delhi-NCR, Sonapat (Haryana).

The question that usually arises in the minds of biology students is why to choose Microbiology courses instead of the conventional basic science courses like Botany and Zoology? To answer this question, let's first understand Microbiology as new age biology disciplines. Microbiology deals with the function, structure, uses, and existence of a microbe i.e., those organisms which are very small and can't be seen with the naked eye like bacteria, viruses, and fungi. An example is of bacteria in "Yogurt" where bacterial cell helps the milk to change into yogurt using fermentation process. It encompasses molecular biology, microbiology, genetic engineering, recombinant DNA technology, biochemistry and bioinformatics. The course curriculum being offered by the department provides in-depth knowledge of Food and Dairy Microbiology, Pharmaceutical Biotechnology, Animal Biotechnology, Plant Biotechnology, Microbial Genetics, Downstream Processing, Nanotechnology and Biostatistics. Our department has well-trained faculty with both national and international collaborations in reputed institutions which opens doors for our students to further their careers. The Department has well-equipped laboratories

to provide hands-on training and research exposure to the students. We have state of the art lab facilities along with specialized Centre for Drug, Discovery, Designing & Development (C4D) unit to support our academic courses and research areas. Our department is having active research groups for carrying out collaborative and interdisciplinary research.

Programme	Type	Duration	Tuition Fee (Annual)
M.Sc. - Microbiology	PG	2 years	60,000/-
Ph.D. - Microbiology	-	-	1,50,000/-

## CAREER PATHS

Job opportunities available in Microbiology sector are booming year by year in India and abroad. Students with a degree in Microbiology may work in a variety of settings, including healthcare, forensic science labs, environmental organizations, higher education institutions, food and beverage, and biopharmaceuticals.

- Research Scientist
  - Professor
  - Genetic Counsellor
  - Quality Assurance Technologist
  - Food Safety Analyst
- Medical Writer (Technical Copy Writing)
  - Science Journalist
  - Data Science & Big Data Analyst
  - Product Marketing Manager
  - Technical Sales & Business Development Manager



FOR DETAILED  
INFORMATION  
SCAN CODE

and many more...





# DEPARTMENT OF PHYSICS

The Department of Physics at SRM University Delhi-NCR is a young and dynamic Department. Having started its journey in 2013 as a part of the Faculty of Science & Humanities primarily for supporting the engineering courses of this university, it has grown rapidly within very short time to become a full-fledged department by its own rights and merit. The department draws its strength from its well-qualified faculty members (all are Ph.D. from very reputed institutes including IIT Kanpur, IIT Roorkee, NPL, UGC DAE Consortium etc.) with verse teaching and research experience from reputed institutes from India and abroad (developed nations like Italy, Israel and South Korea). Research and innovation are an integral part of modern-day higher education. Within such a short span, our department has already made its impact in this direction thanks to the active engagement of the faculty members and research scholars in well cited research activities which are regularly published in reputed international journals like Scientific Reports (Nature), Physical Review A (American Physical Society), New Journal of Physics (Institute of Physics, London), ACS Nano etc. Our department strives to become a centre of excellence for higher studies in Physics. At present, we are offering a three-year B.Sc. (Hons) and a two-year M.Sc. programmes in physics. We also offer a Ph.D. program in Physics. Our Department

envisions to build an academic ambience where 'knowledge is free' of all bounds, innovative and creative ideas are encouraged, and talents are nurtured to realize their full potential.

Programme	Type	Duration	Tuition Fee (Annual)
B.Sc. - Physics (Hons.)	UG	3 years	55,000/-
M.Sc - Physics	PG	2 years	60,000/-
Ph.D. - Physics	-	-	1,50,000/-

## CAREER PATHS

Some of the most common as well as emerging career opportunities after the successful completion of an undergraduate (B.Sc.) and/or postgraduate program (M.Sc.) in physics are as follows:

- Higher education and research
- Teaching
- Civil Service
- Content Writers and Blogging/ Media/Analyst
- Scientist or equivalent positions in govt forensic labs, meteorological department, DAE, DST, ISRO, BARC etc.



FOR DETAILED  
INFORMATION  
SCAN CODE



# DEPARTMENT OF COMMERCE

Commerce is all about the understanding of business or trade .It deals with the studies of market, economics, fiscal policies, industrial policy and so on. Commerce is a broad orbit of interdisciplinary branches viz accountancy, business administration, finance, economics, e-commerce and so many. This stream offers a wide range of career options.

B .Com. is one of the courses which, despite being a traditional one, still find takers in the student community due to its approach. The course curriculum has been tailored in such a way so that it can serve the needs according to the requirement in the industry and the implications arising out of it. The students are groomed to do well in professional entrance exams like CA, CS, CWA, CFA and the likes. Not only this, the students are given an exposure to presentation finesse, professional communication and office etiquettes, a far cry from the traditional commerce courses, which, in turn, prepare them well to face the challenges of the coming years. In short, the students have to explore this course to realize the significance of it. In Some of the key highlights of the undergraduate or the post-graduate programme in Commerce at SRM University Delhi-NCR are the Choice Based Credit System as per New Education Policy & Industry

4.0, experiential and experimental learning through live projects, course-specific practical, industrial/academic visits and summer internship programs. Also, the Skill Enhancement Courses and hands-on training equip the students for the current industrial requirements and entrepreneurship training.

Programme	Type	Duration	Tuition Fee (Annual)
B.Com. (Hons.)	UG	3 years	70,000/-
M.Com.	PG	2 years	75,000/-
Ph.D. - Commerce	-	-	1,50,000/-

## CAREER PATHS

With infinite opportunities to grab after a successful completion of an undergraduate (B.Com) and/or postgraduate programme (M.Com) in Commerce, the following are some of the avenues where one can explore his/her future:

- Chartered Accountancy (CA)
  - Company Secretary (CS)
  - Chartered Financial Analyst (CFA)
  - Business Accounting and Taxation (BAT)
  - Certified Management Accountant (CMA)
- US Certified Public Accounting (CPA)
  - Financial Risk Manager (FRM)
  - Association of Chartered Certified Accountants (ACCA)
  - Certified Financial Planner
  - Certificate in Investment Banking (CIB)



FOR DETAILED  
INFORMATION  
SCAN CODE

and many more...



# DEPARTMENT OF MANAGEMENT STUDIES

Faculty of Management at SRM University provides the students with a solid foundation in core business principles while developing a broadened global mind set and understanding of the role of business in society. Students are challenged to delve deep in to the areas that interest them the most and gain the technical, conceptual, human and strategic skills that will assist them to lead a successful and purposeful career.

Furthermore, the department ensures that an interactive new age learning environment is established and followed while emphasizing on attributes required by industries in the present changing world. Our unique progressive values are supreme in a way that provides rational and holistic building of an individual. Some of the key praxes are mentioned underneath.

**Corporate Resource Centre (CRC):** The easier accessibility towards CRC helps the department to have direct access to corporate exposure in terms of industrial visits, organizing corporate talks and guest lectures or consulting with a team of experts.

**Incubation Centre / Entrepreneurship Cell:** Faculty of Management provides a platform for students interested in entrepreneurship by providing them direct expertise within the campus.

**Student Exchange Programs:** These programs provide rich international exposure to our students by providing them with various available opportunities compatible with semester exchange in a foreign country. Some of our key foreign collaborations are Birmingham University, UK; Coventry University, UK; IUBH University, Germany; University of Oxford, UK; Chiba University, Japan; Wesleyan University, US; West Virginia State University, US; Point Park University, Pittsburgh, Pennsylvania and Kyung Dong University, South Korea.

**Soft-Skills Training Modules:** All management students are given exclusive training to build their soft-skills which improves their chances of employability.

**Regular Corporate Interactions:** The department is focussed on maintaining continuous communication with corporate houses by organizing activities such as corporate talks, HR conclave, Guest lectures, Industrial visits and Pre-Placement talks.

Programme	Type	Duration	Tuition Fee (Annual)
B.B.A.	UG	3 years	1,05,000/-
B.B.A. with specialization in Business Analytics (in association with IBM)	UG	3 years	1,50,000/-
M.B.A.	PG	2 years	1,75,000/-
Ph.D. - Business/Management Studies	-	-	1,50,000/-

## CAREER PATHS

The Curriculum of Bachelor of Business administration and Masters of business administration enables the learner to develop innumerable employability skills. The following are some of the avenues where one can explore the zenith of one's potential:

- Financial advisor
  - Management analyst
  - Investment banker
  - Entrepreneur
  - Administrative officer
- HR Manager
  - Finance Manager
  - Marketing Manager
  - Sales Manager
  - Product Manager
- Programme Manager
  - Information Technology Manager
  - Business Consultant
  - Business Operations Managers
  - Operations Research Analyst

and many more...



FOR DETAILED  
INFORMATION  
SCAN CODE





# DEPARTMENT OF LAW

The Faculty of Law at SRM University Delhi-NCR is established to promote excellence in the field of legal education and fulfill the ever increasing demand of quality legal professionals for global employability. The dynamics of our legal education programme is comparable to the best of legal education standards in the country which enables the students to fulfill their aspirations and helps to reach the zenith of their career. Its visionary curriculum is designed in the meticulous way to prepare the students to be technically efficient, socially useful and professionally competent, to meet the challenges of the 21st century and beyond. It offers skills based and interdisciplinary legal education which prepares the students to meet the changing criteria of legal industry.

The department is being planned to be evolved as world class system with highly qualified faculty and state-of-the-art infrastructure. It has smart classrooms, well equipped Library with e-journal access, Moot Court hall, Legal-Aid clinic, Conference hall, Legal research centres to inculcate Interdisciplinary Research Aptitude and the latest learning methods based on best ideas of design & discovery & interface technologies. The academic programme is backed with

case studies, moot courts, live projects, court visits, internships, legal-aid programmes and interaction with lawyers and judges from the High Courts and Supreme Court of India. Innumerable opportunities are provided to the students to participate in national and international events like seminars, conferences, debates, moot court competitions etc.

The Faculty of Law is committed to produce legal eagles that would add new dimensions to legal profession and contribute significantly towards social equity and making legal practice value based.

Programme	Type	Duration	Tuition Fee (Annual)
LL.B. (Hons.)	UG	3 years	75,000/-
B.B.A.LL.B.(Hons.)	INTG	5 years	1,50,000/-
B.A.LL.B.(Hons.)	INTG	5 years	1,50,000/-
LL.M.- one year	PG	1 year	1,25,000/-
Ph.D. - Law	-	-	1,50,000/-

## CAREER PATHS

For the law graduates, choosing a right career in law is an important task, “If you are a law graduate and you do not want to choose your career as a lawyer, then it’s not the time to get worried about this”. As **Litigation** is a traditional option but it is not the only one, there are other options also to choose:

- Corporate Law Firm
  - Judiciary
  - Career in Armed Forces
  - Journalism and Broadcasting
  - LPOs
- Legal Analyst
  - UPSC & State Civil Services
  - Academics
  - Legal Officer in Public Sector Units
  - In House Counsels, Corporate Advisors or Legal Officers in any private organisation



FOR DETAILED  
INFORMATION  
SCAN CODE



# SRM INSTITUTE OF HOTEL MANAGEMENT

SRM Institute of Hotel Management focuses on Hotel operational International Hospitality Management education combined with Skills acquired during the course duration. SRM IHM has the unique privilege to be an integral part of one of the Premier Universities of the country with an international presence across the world - SRM University Delhi-NCR. Our collaborative approach is focused on excellence in teaching, learning and research to develop professionals who would make an exclusive presence in the hospitality world in related disciplines. SRM IHM rewards initiative, novelty and thinking out of the box concepts. Our students are instilled with timeless values of humility, reliability and integrity & encourage them to grow as individuals and excel as a team. Chain of Hotels recruiters value our graduates for their intellectual abilities, their collaborative mind-set, their individuality and their ability to hit the ground running. Hospitality Graduates have an enormous choice of career paths when they are established in the Industry. Career Progression can often be faster than many traditional industries, with responsibilities earlier than other industries. The hospitality and travel industry is probably the most dynamic industry in the world employing about ten percent of the world's working population. Staying relevant is a new challenge for the Millennials and in order to combat these challenges, SRM IHM

provides a combination of world class education and theory as well as the practical know how of the dynamic world of Hospitality Industry. From hotel, events and catering management to business development and marketing, a degree in hospitality management provides you with the skills and knowledge for a successful career in a range of fields:

SRM Institute of Hotel Management offers three year degree course and has established a standard of professionalism, leadership, and service excellence for hospitality and tourism leaders around the world. SRM Institute of Hotel Management excellent infrastructure to match the star category hotels, well equipped Training Kitchens and Bakery & Confectionery to develop culinary (cooking & baking) skills, well equipped Advanced Training Restaurant with Mock Bar to develop Food & Beverage skills, Mock Guest Rooms matching the interiors, comforts of a 5\* hotel room and modernized laundry operations, linen room as housekeeping labs, well designed front Office Lab which matches the lobby and design of an 5\* star hotel, smart class rooms, well stocked Library, state-of-the-art computer lab, 24x7 Wi-Fi campus etc. SRM IHM also operations a café, "The Royal Café" where the operations are managed by the faculty and students of the institute and here the student learns more of Entrepreneurial skills which is one of the avenues for career path.

Programme	Type	Duration	Tuition Fee (Annual)
B.Sc. - Hospitality and Hotel Administration	UG	3 years	77,500/-
B.Sc. - Hotel Management and Catering Technology	UG	3 years	75,000/-

## CAREER PATHS

Hotel Management and Hospitality is a field with a significant share in the service sector of India and abroad. From hotel, events and catering management to business development and marketing, a degree in hospitality management provides you with the skills and knowledge for a successful career in a range of fields:

- Hotels, Airlines, Cruise Lines, Flight Catering, Outdoor Catering Services
  - Facility Management, Event Management
  - Teaching Fraternity in Hotel Management & Culinary Colleges
  - Quick Service Restaurants like McDonalds, Dominos, KFC, Pizza Hut etc.
  - Higher Education/Research Avenue such as M.Sc./MBA in Hospitality Management, Masters in Tourism Management, P.hD studies and Research including publications
- Entrepreneurial Avenues such as owning Start up, Cloud Kitchens, MSME enterprises, Freelance Photographer/Food Stylist, Home Cooking Unit, Institutional Catering and Consultancy



FOR DETAILED  
INFORMATION  
SCAN CODE



# SRM PRIMSR HOSPITAL

The SRM PRIMSR Hospital is a thirty bed hospital located at the SRM University Delhi-NCR, Sonapat campus in the Rajiv Gandhi Education city. The hospital was established by the SRM University trust and was made for the purpose of providing affordable quality health care to students and faculty members of the university, and the rural farming communities who live in villages near the university. In the last five years, patients from twenty villages within a ten-kilometer radius have been seeking health care from our hospital; the people served at the hospital are the poorest amongst these villages. It is important to mention here that the rapid urbanization of Sonipat has witnessed the residents of the nearby gated-communities seeking health care services from SRM PRIMSR Hospital rather than in Delhi or Multi-specialty hospitals elsewhere in this area.

The SRM PRIMSR Hospital is privileged to have very experienced doctors. There are consultants to provide Paediatric, Ophthalmology, Ear, Nose and Throat, and Orthopedic services. The hospital also has a doctor for Women's health and a Dental department. Some of the significant strengths of the hospital are its minimal consultation charges, in-patient treatment and investigations at very low cost. The hospital is equipped with excellent laboratory testing facility and an X-ray center as well. The nursing staff are well-experienced, friendly and helpful, efficiently contributing to emergency and routine health care.







# Jan Aushadhi Medical Store

## PRADHAN MANTRI JAN AUSHADHI YOJNA (PMJAY)



Another key aspect of the SRM PRIMSR Hospital is the Jan Aushadhi Store. Good quality and affordable priced medicines are available at the Jan Aushadhi store at SRM PRIMSR hospital. The pharmacy is one of the first to be part of the Pradhan Mantri Jan Aushadhi Yojna (PMJAY) and has medicines for all types of patients. It is available for the medical needs of students while on campus, and also has essential products for sanitary needs for the women students. Post pandemic, the pharmacy is equipped with disposable masks, hand sanitizers and gloves for the use of students and faculty members alike to encourage protection of the self from infectious diseases.

# NATIONAL CADET CORPS

NCC provides the appropriate environment to develop discipline, responsibility, leadership and mobility among the guides and students. The NCC at SRM University Delhi-NCR was inaugurated on 10th November, 2020 by Col. S.K. Sood of the 12 Haryana Battalion NCC Sonapat. NCC is open to all regular students of the college on a voluntary basis. Every year in the month of July the students are informed about the fresh enrollment (only for the first-year students). The officers and cadets have no liability for active military service. For the first batch of NCC at SRMUH, 54 students are recruited – 34 boys and 20 girls.



## ORGANIZATION

The NCC is headed by a Director General of the rank Lieutenant-General. He is assisted by two Additional Director Generals (A and B) of two-star rank (Major-General, Rear-Admiral or Air vice-Marshal). Five Brigadier level officers and other civil officials also assist him. The Headquarters is located in Delhi. There are 17 Directorates, located in the state capitals headed by an officer of the rank of a Major General from the three Services. Depending upon the size of the state and growth of NCC in the states, Directorates have up to 14 Group Headquarters under them through which they exercise their command and control of the organization in the state. Each group is headed by an officer of the rank of Brigadier or equivalent known as Group Commander. Each NCC Group Headquarter control 5-7 units (BNs) commanded by Colonel/Lt. Col or equivalent. Each Battalion consists of companies which are commanded by the Associate NCC Officer (ANO) of the rank of Lieutenant to Major. In all there are 95 Group Headquarters in the country who exercise control over a network of 667 Army Wing Units (including technical and girls unit), 60 Naval Wing Units and 61 Air Squadrons. There are two training establishments namely Officers Training School, Kamptee (Nagpur, Maharashtra) and Women Officers Training School, Gwalior.

## ENROLMENT OF STUDENTS AS NCC CADETS:

1. Eligibility Conditions
  - Citizen of India
  - Bearing good moral character
  - Enrolled in an educational institution
  - Meets the prescribed medical standards
  - Age Senior Division/Wing (Boys/Girls) – 15 to 23 years
  - Enrolment Period Senior Division/Wing (Boys/Girls) – 3 years
2. Physical examination: This is first step of selection procedure. It includes run, chin-up, sit-up etc
3. Written test and Interview
4. Application for Enrolment
5. A student desirous of being enrolled in the Senior Division shall apply to the ANO / Officer Commanding of the nearest NCC Unit
6. Medical Examination

## DOCUMENTS REQUIRED:

- 10th and 12th class mark sheet
- Blood group certificate
- Aadhar Card photocopy
- Cadet/Guardian's Bank account details photocopy
- College admission fee receipt
- Passport size photo civil uniform

## TRAINING PERIOD

Total training period for SD and SW is 3 years with an extension of 1 year permissible on exceptional condition. Every cadet has to undergo service training for a period of at least 4 hours per week during the training year. However, no training is carried out during periods when the college or school (through which a cadet is enrolled) is closed for vacation. Every cadet must undergone service training for a minimum period of 75% of total hours during the annual college. Every cadet, who has completed one full year of training and is in his/her (second year), must attends an annual training camp of 9–10 days to fulfil the eligibility for certificate exam.



## OBJECTIVES:

- To develop qualities of character, courage, comradeship, discipline, leadership, secular outlook, spirit of adventure and sportsmanship and ideals of selfless service among the youth to make them useful citizens
- To create a human resource of organized, trained and activated youth, to provide leadership in all walks of life including the armed forces and always available for the service of the nation

## CAREER OPTIONS

- SSC in Army (NCC Special Entry Scheme)
- COAST GUARD
- AIR FORCE (Airman)
- Border Security Force
- Central Reserve Police
- Central Industrial Security Force
- Indo Tibetan Border Police
- Benefit in academia
- Reliance security

The uniqueness of NCC lies in its focused training activity round the year through highly dedicated Armed Forces and NCC Cadre personnel to achieve laid down aims and objectives for youth empowerment. Unity and Discipline are foremost and the Nation Supreme in nurturing future leaders of the Country. NCC is an institution dedicated to create 'Leaders of Tomorrow', encouraging them to discover their true calling, honing their abilities to pursue their dreams and foray into the world as empowered, responsible and true citizens. NCC empowers the youth with sound values and cherished ideals, offering plethora of opportunities to excel in all walks of life and become worthy citizens of our great Nation.

## LIST OF NCC ACTIVITY

Throughout the year, various camps are organized to train cadets in all fields. These activities are as follow:

### CAMPS

- Republic Day Camp (RDC)
- Prime Minister's Rally
- Combined Annual Training Camps (CATC)
- National Integration Camp (NIC)
- Advance leadership course
- Army Attachment Camp
- Hiking and Trekking Camps
- Thal Sainik Camp (TSC)
- Nau Sainik Camp (NSC)
- All India Yachting Regetta (AIYR)
- Rock Climbing Camps (RCC)
- Youth Exchange Programme

### SOCIAL SERVICE AND COMMUNITY DEVELOPMENT

- Adventure Based Learning
- Mountaineering Expeditions
- All India Trekking Expedition
- Camel Safari
- Parasailing
- Para Basic Course
- Cycle and Motor Cycle Rallies
- Sailing Expedition
- Sea Sorties

### SPORTS

- NCC National Games
- All India GV Mavlankar Shooting Competition
- Equestrian Events
- Jawaharlal Nehru Cup Hockey Tournament
- Subroto Cup Football Tournament
- Sailing Regatta is conducted every year at INS Chilka in Odisha

## SCHOLARSHIPS AND AWARDS

NCC cadets have an opportunity to get scholarship from various schemes.

- Scholarships by CWS- (250 Nos)
- Best cadet awards – 02 Nos
- Sahara Scholarships – 1016 Nos
- Raksha Mantri Padak
- Raksha Mantri Commendation Card
- Governor's Gold Medal
- Governor's Silver Medal
- Chief Minister's Gold Medal
- Chief Minister's Silver Medal
- DG Commendation Card





# NATIONAL SERVICE SCHEME

National Service Scheme popularly known as NSS was launched in Mahatma Gandhi Centenary year 1969 and aimed at developing student's personality through community service. The overall objective of National Service is educational. This objective is attained through the service to the community. The sole aim of the NSS is to provide hands on experience to young students in delivering community service. At SRMUH, NSS was introduced in October, 2020. 58 students have registered for the first batch of NSS at SRMUH.

## OBJECTIVES:

The overall objective of NSS is Personality Development through community service. The objectives of NSS are to:

- Understand the community in which they work
- Understand themselves in relation to their community
- Identify the needs and problems of the community and involve them in problem solving process
- Develop among themselves a sense of social and civic responsibility
- Utilize their knowledge in finding practical solution to individual and community problems
- Develop competence required for group-living and sharing of responsibilities
- Gain skills in mobilizing community participation
- Acquire leadership qualities and democratic attitude
- Develop capacity to meet emergencies and natural disaster and practice national integration and social harmony

## NATIONAL SERVICE SCHEME AWARD

The Ministry of Youth Affairs and Sports, Government of India had instituted the National Service Scheme Awards to recognize the voluntary service rendered by NSS volunteers, Programme Officers, NSS units and the university/senior secondary council.

These awards were instituted in the year 1993-1994. Since then, these awards are given away every year at various Levels. The details of these awards are as follows:-

Category	No. of Awards	Value of each award
University/+Council	1	Rs. 3,00,000/-
Upcoming University	1	Rs. 2,00,000/-
Programme Officer	10	Rs. 70,000/-
NSS Unit	10	Rs. 1,00,000/-
NSS Volunteer	30	Rs. 50,000/-



राष्ट्रीय सेवा योजना  
**National Service Scheme**  
युवा कार्यक्रम और खेल मंत्रालय  
**Ministry of Youth Affairs and Sports**  
भारत सरकार  
**Government of India**

## NSS SYMBOL

- The NSS symbol is based on the Rath wheel of the Konark Sun Temple situated in Odisha
- The navy blue colour indicates the cosmos of which the NSS is a tiny part, ready to contribute its share for the welfare of the mankind
- The Red colour in the badge indicates that the NSS volunteers are full of blood i.e. lively, active, energetic and full of high spirit
- The giant wheels portray the cycle of creation, preservation and release, and signify the movement in the life across time and space

## MOTTO

The motto of National Service Scheme is  
**NOT ME BUT YOU**

## LIST OF NSS ACTIVITY:

- Adoption of Villages
- Survey of the Village/Area
- Adoption of Slums
- Survey of the Slum
- National Integration Camp (NIC)
- Adventure Program
- NSS Republic Day Parade Camp
- Health, Family Welfare and Nutrition Programme
- Environment Enrichment and Conservation
- Programmes aimed at creating an awareness for improvement of the status of women
- Education and Recreations

## BENEFITS OF NSS

- Personality Development
- Incentive
- Preference in Admission / Employment
- It helps in acquiring leadership qualities and democratic attitude
- It provides diversified opportunities to students in colleges and universities to develop their personality through community service
- It develops a sense of involvement in nation building
- Volunteer's interaction with the slum dwellers and villagers expose them to the realities of life and bring about a change in their social perception
- It helps in developing positive attitude, self-confidence, courage & patience
- It helps in developing his / her skill to perform certain jobs, quality of an organizer, an
- He/she gets opportunities to see the community closely and thus gets an experience of human nature in relation to his / her environment
- He/she gets the opportunity to participate in various National / State level programme such as National Integration, Motivational Lamps, value oriented self-development camps, Adventure camps, workshops. Youth exhibition, cultural programmes etc
- A National service scheme contingent of 160 (boys and girls) participants selected after a rigorous test participates in the Republic day parade camp for 3 weeks at New Delhi in the month of January every year
- NSS volunteer completing 240 hours of regular community service in a period of two years is to be issued an NSS certificate by the college / +2 level Institution or the University/Directorate of education

## OVERALL OBJECTIVE OF NSS

Development of Student's personality through community service.

## GOAL OF NSS

Education through community service and community services through education

## NSS DAY

NSS was formally launched on 24th September, 1969, the birth centenary year of Father of the Nation. Therefore, 24 September is celebrated every year as NSS Day with appropriate programmes and activities.

## PRINCIPAL ELEMENTS OF NSS PROGRAMME

There are four principal elements in the NSS programme process; they are **Students, Teachers, Community and the programme.**

## CONTROLLER OF SCHEME

The Programme Adviser, NSS, New Delhi is the National Head controlling this scheme.

## CRITERIA

Simply by enrolling/registering yourself in NSS unit through the Programme Officer concerned However, before joining you must be a bona fide student of school, college or university. NSS is a voluntary Scheme.

## HOW ONE CAN GET NSS CERTIFICATE

Total 240 hours social service in two years duration. Of which 20 hours for orientation course, 30 hour for campus work and remaining 70 hours for community services in a year. Further a seven-day special camp will be attended by the NSS Volunteer in the adopted village.





# STATE-OF- THE-ART LABORATORIES



# HOSTEL

~ Home Away from Home

*Choosing a university is also about choosing a new home. We ensure that students dwell in a healthy environment that helps them to grow and learn without any obstacle.*



SRM University Campus has separate hostels for boys and girls with all modern facilities and attached mess. The hostel mess serves fresh and hygienic food. You will be provided with facilities like internet, music room, and common room with TV & cable facility, salon facilities, room for indoor games and a reading room with a collection of national/international newspapers and magazines. The hostels' houses have a fully equipped gym and separate courts for Volleyball, Basket Ball, and Badminton. The concerned and highly-experienced staff looks after the university assets and ensures that the hostel remains responsive all the time.

## Sports Infrastructure within campus

SRM University Delhi-NCR believes in the holistic development of an individual, and hence, sports are given as much importance as academics. SRM University Delhi-NCR provides ample space, resources and facilities for its students to indulge in the activities which not just gives them pleasure and satisfaction, but also provides them with the opportunity to achieve expertise in it. The following are some of sporting facilities available at SRM University Delhi-NCR campus:

- Basketball court
- Cricket ground
- Hockey ground
- Indoor Badminton court
- Table tennis
- Chess
- Caroms

## HOSTEL FACILITIES

The hostel rooms are comfortably-furnished and make for a good home away from home. Girls and boys have separated blocks and each block has a fixed capacity and there is a range of accommodation options to choose from (as per student's convenience). The following are some of the highlights of the university hostels:

- Common-room
- Aqua guard for hot, cold and normal drinking water
- Geysers installed in all the hostel- rooms for hot water
- Leisure/sports activities withing the hostel premise
- 24x7 Wi-Fi connectivity provided in all hostels
- CCTV cameras at entrances of all hostels and foyer inside the campus
- 24x7 electricity and water supply in all the hostels
- Lush green non-polluted campus
- Caretakers and housekeeping services are provided in all hostels during day and night
- Transport service is available to visit nearest market
- A scaled down version of Gyms in all hostels and instructors for some specific games
- 24 x 7 availability of medical facility by University PRIMSR hospital

# STUDENT'S LIFE

## A Rare Learning Experience!

### Auditorium

Our University possesses a well-furnished, air-conditioned and spacious state-of-the-art for audio visual facility which can accommodate up to 1000 persons for convocation, National-International Seminar, Students Annual Day etc.



### Sports

SRM University possesses a good sports facility in the campus for outdoor and indoor sports, like football ground, badminton, basketball, tennis court, cricket pitch for net practice etc. Indoor games are also available in the hostel like chess, carom, and table-tennis. Each hostel is provided with a table tennis board at each floor.



### Transportation

The SRM University provides a safe air-conditioned / non- air-conditioned transport for students, with a communication system and supervised pick up and dispersal.

Though, the Campus is located at a well-connected place. There is easy availability of public conveyance for students who come from Delhi/ Sonipat and other parts of Haryana. The campus is just a few kilometers away from Delhi.



### Healthcare

The Duly-qualified staff members with proper first aid training have been ensured by the University. In addition to that we have the day-to-day attendance to ailments, special attention is paid to the health of the students.



## Cultural Events

Various innovative festivals are celebrated in and around the campus which have a great significance in terms of celebrations and creating bonds. Every festival we organize has a story behind them which becomes the core of the celebrations. SRMUH is a place to learn the diversity of multiple cultures and rituals that our magnificent country has been following.

## Newsletter: Reflection and Spectrum

These newsletters help us connect within and to the outside world. Spectrum is a monthly magazine that shares all happenings in the SRM world. Reflection is our online newsletter which is again coordinated by the student's team in association with the papyrus club. New teams are formed every year.

## Adventure Club

Adventure club aims to promote adventure and fun among the students. Trekking, turtle walks, rock climbing are planned throughout the year.

## Quizzers Club

The main motive of our Quizzing Club is to create an atmosphere of competitive fellowship. The club hosts monthly quizzes to test the academic knowledge of the students.

## SPARKS Initiators

S.P.A.R.K.S. Init\_iators is a club for everyone, regardless of their career stage and current level of knowledge. Coding Club is a place which brings people together regardless of their gender or background. We all have the right to learn and we believe that learning is more fun and efficient when we start helping each other.

## Enviro Club

The Enviro club was formed with the objective of creating awareness to preserve our planet and an undertaking that – I will do my bit. The members create awareness through posters inspiring our students to use less electricity, reduce wastage of water, and say 'no to plastic', workshops-waste to wealth, vermicomposting, recycling paper, initiatives like planting trees, having eco-friendly attitudes.



# SRMUH THE WORLD CLASS INFRASTRUCTURE!

GATEWAY TO SRM SONEPAT



## SRMH CAT'23

SRM HARYANA COMMON APTITUDE TEST - 2023



Admission starts from November 2022

for more details, please visit [admissions.srmuniversity.ac.in](https://admissions.srmuniversity.ac.in)



1st University to have academic  
affiliate with IET in Haryana

### AAAAA+

Rated University in North India  
by Careers360

### 47.89

Acres Campus well connected  
with North India

### 70+

Programs offered by the  
Multidisciplinary University



Indian University powered by  
NASSCOM FutureSkills

### 50+

International & Industry  
Collaborations



Excellence in IT-Enabled  
Learning by Education World

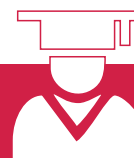


Ranked among Top 50  
Universities in India

### 24+

Indian State & Union territories  
represented by Students

# STUDENT SCHOLARSHIPS



To encourage and support meritorious candidates, SRM University Delhi-NCR, Sonepat has implemented a very distinctive scholarship programme called the '**SRMH Scholar Search Programme**'. Under this Programme, an applicant may qualify for a scholarship up to 100% on the University Tuition Fee. The scholarship offered is applicable to the duration of the programme, subject to maintaining the required CGPA. **Please note that all scholarships are subject to availability and are granted on first come first served basis.**

## Chancellor's Scholarship

This is a prestigious scholarship for academically meritorious candidates, achievers in sports, based on economic background. The meritorious students can also avail School Toppers' Scholarship on the basis of their merit in XII examination.

- Students with  $\geq 95\%$  in XII examination are eligible for 100% scholarship in tuition fees.
- Students with 92-94.9% in XII examination are eligible for 75% scholarship in tuition fees.
- Students with 89-91.9% in XII examination are eligible for 50% scholarship in tuition fees.
- Students with 80-88.9% in XII examination are eligible for 25% scholarship in tuition fees.
- Students with 75-79.9% in XII examination are eligible for 10% scholarship in tuition fees.

Scholarship from 10-100% is subject to the valid score of SRMHCAT.

The state topper of each board is eligible for 100 % Scholarship in tuition fee.

**The state topper of each board is eligible for 100 % Scholarship in tuition fee.**

% of Scholarship	JEE Main percentile	SAT Score
100% of First Year Tuition Fee	98-100	1550 +
75% of First Year Tuition Fee	96-97.99	1500-1549
50% of First Year Tuition Fee	90-95.99	1400-1499
25% of First Year Tuition Fee	85-89.99	1300-1399
10% of First Year Tuition Fee	75-84.99	1200-1299

**Note:** All scholarships will be awarded on first cum first served basis, as limited scholarships are available. For Industrial collaboration programmes in association with IBM, XEBIA, TCS etc. maximum scholarship up to 25 % on Tuition Fee will be awarded.

## Haryana Domicile Scholarship

As per provisions of the Haryana State Private Universities Act, 2006 clause 35 & 36 SRM University Delhi-NCR, Sonepat, Haryana has implemented the provision of Scholarships for Haryana Domicile Candidates (25% of total seats). The criteria for availing the scholarship are:

- Rank/Performance in the National Level Entrance Examination i.e. SRMHCAT only.
- The student must fulfil the minimum eligibility criteria.
- Continuation of the scholarship in the subsequent years will be on the basis of minimal academic performance.

It is mandatory for candidates applying under the category of Haryana Domicile to submit Domicile certificate at the time of counselling/admission.

Contd...

# STUDENT SCHOLARSHIPS



## Eligibility criteria for the scholarship – (Haryana Domicile & Chancellor Scholarship)

As per the policy adopted by the University for the continuation of **Haryana Domicile Scholarship** for the second & subsequent years, the following conditions must be fulfilled:

- Student should have cleared all the subjects of their respective semesters.
- To continue the scholarship – Cumulative Grade Point Average (CGPA) shall be 7.5 and above.

For continuation of **Hon'ble Chancellor's Scholarship** for the second and subsequent years will be subject to securing a minimum CGPA as mentioned below:

Student should have cleared all the subjects of their respective semesters.

- For 100% & 75 % scholarship – Cumulative Grade Point Average (CGPA) shall be 9.00 and above.
- For 50% scholarship – Cumulative Grade Point Average (CGPA) shall be 8.00 and above.
- For 25% scholarship – Cumulative Grade Point Average (CGPA) shall be 7.00 and above.
- For 10% scholarship – Cumulative Grade Point Average (CGPA) shall be 6.00 and above.

## Student Scholarship for SRMJEEE Aspirants

Percentage of Scholarship	SRMJEEE Rank
100% of First-Year Tuition Fees	Top 100
75% of First-Year Tuition Fees	101-500
50% of First-Year Tuition Fees	501-1000
25% of First-Year Tuition Fees	1001-3000
10% of First-Year Tuition Fees	3001-5000

## Student Scholarship on the basis of CLAT Ranking

Percentage of Scholarship	CLAT Rank
50% scholarship on tuition fee	1300-3000
25% scholarship on tuition fee	3001-5000
10% scholarship on tuition fee	5001-7000

This policy is valid only for the AY 2022-23.

## Scholarship for Diploma holders (Lateral entry) only

Scholarship Policy for Lateral Entry Admission in B. Tech for the Academic Year 2022-23 only. (Except for Specialization courses like IBM, TCS & Xebia)

Percentage of Scholarship	Percentage in Diploma
25 % of Second Year Tuition Fee	60 % or more in 3 year Diploma

For continuation of Scholarship for the Third & subsequent years will be subject to securing a minimum CGPA of 7 and above. In case of CGPA less than 7, the scholarship will be discontinued.

Student should have cleared all the subjects of their respective semesters.

This policy is valid only for the AY 2022-23.





## Chancellor Sports Scholarship

To encourage and support meritorious candidates, SRM University Delhi-NCR, Sonapat has implemented a new scholarship scheme '**Chancellor's Sports Scholarship**'.

SRMUH believes in wholistic learning and gives importance to each individual student who excels at all spheres of youth life. In this regard, sports being an essential tool to empower one, both physically and mentally, such scholarship schemes are provided to motivate and inspire students excelling in the field of sports.

### How to avail the "Chancellor's Sports Scholarships"

- **Step 1** – To fill the application form. [Click Here](#)
- **Step 2** – In consultation of the Directorate of Physical Education & Sports, a date will be fixed for the Sports Trial and the same will be communicated to you.
- **Step 3** – The documents of the student will be given for verification. Afterwards, student will also have to attend the "Physical & Skill Test". The date for the same will be communicated to the students.
- **Step 4** – On the basis of the credential and fitness test, a list of selected candidates will be announced by the University.

## Financial Aid for Serving/ Retired Defence/ CAPF/ Para- Military Personnel and their Dependents

SRMUH is providing the financial aid to encourage our dedicated soldiers in the Defence and Central Armed Police Forces (CAPF) and their dependents.

**Defence forces considered under the scheme:** Indian Army, Indian Navy, Indian Air Force, Indian Coast Guard, Central Reserve Police Force (CRPF), Border Security force (BSF), Indo-Tibetan Border Police (ITBP), Sashastra Seema Bal (SSB), Central Industrial Security Force (CISF), Railway Protection Force (RPF), National Security Guards (NSG), Special Frontier Force (SFF), Assam Rifles, Border Road Organization, General Reserve Engineer Force (GREF), Defence Research and Development Organization (DRDO), Military Engineers Service (MES), Defence Security Corps (DSC), Ordnance Factory Board.

**Financial Aid to Serving Defence Personnel and those who are nominated through study leave:** Categorization of recipients for eligibility relaxation and financial aid to serving officers. The details are mentioned below:

Sr.No.	Categories	Classification	Financial Aid
1	Category – A	Recipients of Gallantry awards- (ParamVir Chakra, Ashok Chakra, Mahavir Chakra, Kirti Chakra, Veer Chakra & Shaurya Chakra, President's Tatrakshak Medal and Tatrakshak Medal, President's Police medal for Gallantry, President's Police Medal for Meritorious Service, President's Police Medal for Distinguish Service, President's Police medal, Sena medal, disabled in action & boarded out)	50% on tuition Fee
2	Category – B	Serving Officers (Other than above) nominated through study leave	25% on tuition Fee

**Financial aid to dependents of recipients of various awards and Ex-Servicemen/Retired Defence Personnel:** Categorization of dependents of recipients of various awards and Ex-servicemen for eligibility relaxation and financial aid to dependents the details are mentioned below:

Sr.No.	Categories	Classification	Financial Aid
1	Category – C	All the dependents of Recipients of Gallantry awards- (ParamVir Chakra, Ashok Chakra, Mahavir Chakra, Kirti Chakra, Veer Chakra & Shaurya Chakra, President's Tatrakshak Medal and Tatrakshak Medal, President's Police medal for Gallantry, President's Police Medal for Meritorious Service, President's Police Medal for Distinguish Service, President's Police medal, Sena medal, and Killed in action, disabled in action & boarded out)	25% on tuition Fee
2	Category – D	Serving personnel/ ex-servicemen/ retired personnel (from all defence forces mentioned above)	10% on tuition Fee

# PROGRAMS & FEE STRUCTURE

## FACULTY OF ENGINEERING AND TECHNOLOGY

Program	Type	Duration	Tuition Fee (Annual)
B.Tech. - Computer Science and Engineering (CSE)	UG	4 years	2,00,000/-
B.Tech.- Computer Science & Engineering with specialization in Data Science & Artificial Intelligence (in association with IBM)	UG	4 years	2,50,000/-
B.Tech. - Computer Science & Engineering with specialization in Blockchain & IoT (in association with IBM)	UG	4 years	2,50,000/-
B.Tech. - Computer Science & Engineering with specialization in Cloud Engineering and DevOps Automation (in association with Xebia)	UG	4 years	2,50,000/-
B.Tech. - Computer Science & Business Systems (in association with TCS)	UG	4 years	2,50,000/-
B.Tech. - Civil Engineering (CE)	UG	4 years	1,75,000/-
B.Tech. - Biomedical Engineering (BME)	UG	4 years	1,75,000/-
B.Tech. - Electrical & Electronics Engineering (EEE)	UG	4 years	1,75,000/-
B.Tech. - Electronics & Communication Engineering (ECE)	UG	4 years	1,75,000/-
B.Tech. - Mechanical Engineering (ME)	UG	4 years	1,75,000/-
M.Tech. - Computer Science and Engineering (Big Data Analytics)	PG	2 years	1,00,000/-
M.Tech. - Civil (Structural Engineering)	PG	2 years	1,00,000/-
M.Tech. - Electronics & Communication (Microelectronics and VLSI Design)	PG	2 years	1,00,000/-
M.Tech. - Production Engineering	PG	2 years	1,00,000/-
Ph.D. - Computer Science and Engineering (CSE) Ph.D. - Civil Engineering Ph.D. - Electronics & Communication Engineering Ph.D. - Mechanical Engineering (ME)	-	-	1,50,000/-

(AY-2022-23)

FACULTY OF SCIENCE & HUMANITIES

Program	Type	Duration	Tuition Fee (Annual)
B.A. - English (Hons.)	UG	3 years	55,000/-
B.A. - Economics (Hons.)	UG	3 years	55,000/-
B.A. - Political Science (Hons.)	UG	3 years	55,000/-
B.A. - Psychology (Hons.)	UG	3 years	55,000/-
B.C.A.	UG	3 years	70,000/-
B.Sc. - Chemistry (Hons.)	UG	3 years	55,000/-
B.Sc. - Physics (Hons.)	UG	3 years	55,000/-
B.Sc. - Mathematics (Hons.)	UG	3 years	55,000/-
B.Sc. - Food Technology (Hons.)	UG	3 years	55,000/-
B.Sc. - Agriculture Science (Hons.)	UG	4 years	1,50,000/-
B.Sc. - Statistics (Hons.)	UG	3 years	55,000/-
M.A. - English	PG	2 years	60,000/-
M.C.A.	PG	2 years	75,000/-
M.Sc. - Biotechnology	PG	2 years	60,000/-
M.Sc. - Chemistry	PG	2 years	60,000/-
M.Sc. - Mathematics	PG	2 years	60,000/-
M.Sc. - Physics	PG	2 years	60,000/-
M.Sc. - Microbiology	PG	2 years	60,000/-
M.Sc. - Environmental Science	PG	2 years	60,000/-
Ph.D. - Microbiology Ph.D. - Environmental Science Ph.D. - Mathematics Ph.D. - Physics Ph.D. - English Ph.D. - Chemistry Ph.D. - Biotechnology Ph.D. - Library and Information Sciences Ph.D.- Computer Science	-	-	1,50,000/-



# PROGRAMS & FEE STRUCTURE

## FACULTY OF LAW

Program	Type	Duration	Tuition Fee (Annual)
LL.B. (Hons.)	UG	3 years	75,000/-
B.B.A.LL.B.(Hons.)	INTG	5 years	1,50,000/-
B.A.LL.B.(Hons.)	INTG	5 years	1,50,000/-
LL.M.- one year	PG	1 year	1,25,000/-
Ph.D. - Law	-	-	1,50,000/-

## FACULTY OF HOTEL MANAGEMENT

Program	Type	Duration	Tuition Fee (Annual)
B.Sc. - Hospitality and Hotel Administration	UG	3 years	77,500/-
B.Sc. - Hotel Management and Catering Technology	UG	3 years	75,000/-

## FACULTY OF COMMERCE & FINANCE

Program	Type	Duration	Tuition Fee (Annual)
B.Com. (Hons.)	UG	3 years	70,000/-
M.Com.	PG	2 years	75,000/-
Ph.D. - Commerce	-	-	1,50,000/-

(AY-2022-23)

FACULTY OF MANAGEMENT STUDIES

Program	Type	Duration	Tuition Fee (Annual)
B.B.A.	UG	3 years	1,05,000/-
B.B.A. with specialization in Business Analytics (in association with IBM)	UG	3 years	1,50,000/-
M.B.A.	PG	2 years	1,75,000/-
Ph.D. - Business/Management Studies	-	-	1,50,000/-

OTHER CHARGES

Faculty	Annual		One Time	
	Library/ Sports Charges	Career Development Fee	Registration & Counselling Charges (Non-Refundable)	Security Deposit Refundable
Engineering and Technology	6,000/-	10,000/-	15,000/-	10,000/-
Law	6,000/-	10,000/-	15,000/-	10,000/-
Management Studies (BBA Only)	6,000/-	10,000/-	15,000/-	10,000/-
Management Studies (MBA Only)	6,000/-	15,000/-	15,000/-	10,000/-
Finance & Commerce	6,000/-	10,000/- (NIL in case of M.Com.,)	10,000/-	10,000/-
Science and Humanities	6,000/-	10,000/- (NIL in case of PG programmes)	10,000/-	10,000/-
Hotel Management	6,000/-	10,000/-	10,000/-	10,000/-
Ph.D. programmes	NIL	NIL	NIL	NIL

- **Security** Rs. 10,000/- (Refundable) for all courses /programmes including Ph.D programme.
- **Uniform & Tool Kit** Rs. 8,000/- (Non-Refundable) for "B.Sc. - Hotel Management and Catering Technology"
- **Educational & Excursion Trip** Rs. 6,000/- (Non-Refundable) for "B.Sc. - Hotel Management and Catering Technology"
- Paper wise semester examination fee will be charged extra as per rules of the University.
- Ph.D.- For Course Work, paper wise examination fee will be charged extra as per rules of the University.

# EXAM FEE STRUCTURE (INR) : 2022-2023

S. No.	Exam Fee Head	Management	Law
1.	Registration Application	300/-	300/-
2.	Regular Theory	450/-	600/-
3.	Arrear Theory	450/-	600/-
4.	Regular Lab/ Clinical/Summer /Industrial, Training / Internship	1,000/-	1,000/-
5.	Arrear Lab / Clinical/Summer/ Industrial, Training / Internship	1,000/-	1,000/-
6.	Regular Project/Dissertation /Viva Voce	2,000/-	1,000/-
7.	Arrear Project/Dissertation /Viva Voce	2,000/-	1,000/-
8.	Thesis and Synopsis	*	*
9.	Re Totalling Answer sheet (Theory) Fees	500/-	500/-
10.	Xerox Answer Sheet (Theory) Fees	500/-	500/-

**Disclaimer:** University reserves the right to revise exam fee across any term/semester

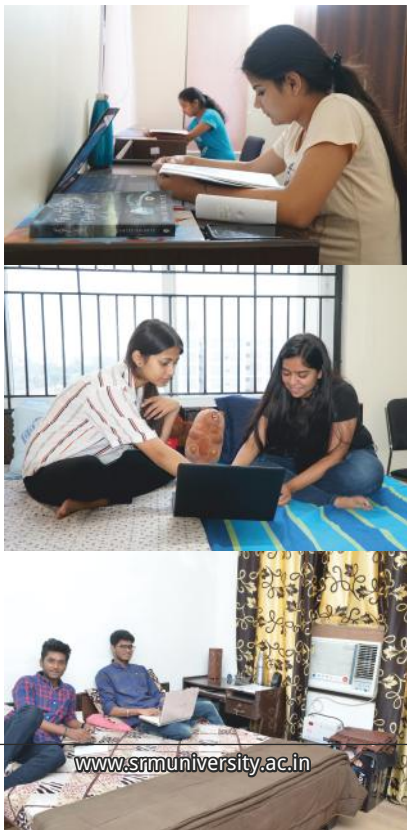
## OPTIONAL CHARGES

### Hostels

Home Away from Home

Hostel - As per rules (if applicable)		Occupancy	Hostel Fee (Annual - In Rs.)
AC Boys	In Campus	Double	2,00,000/-
		Single	3,00,000/-
AC Girls	In Campus	Double	2,00,000/-
		Single	3,00,000/-

**Security (One Time) :** Rs. 10,000/- (Refundable)







B. Tech / B.Com / B.Sc. /B.A.	M. Tech /M.Com /M.Sc./M.A.	B. Sc. Hotel Management	Ph.D. Course Work / Thesis
300/-	300/-	300/-	300/-
450/-	450/-	450/-	1000/-
450/-	450/-	450/-	1000/-
600/-	750/-	600/-	*
600/-	750/-	600/-	*
750/-	2000/-	750/-	*
750/-	2000/-	750/-	*
*	*	*	20000/-
500/-	500/-	500/-	500/-
500/-	500/-	500/-	500/-

## University Transportation

S. No.	Route From SRM University Haryana	Transport Fees (Annual)
1.	Sonepat	30,000/-
2.	Panipat	40,000/-
3.	Rohtak	45,000/-
4.	Karnal	45,000/-
5.	Delhi	45,000/-
6.	Ghaziabad (Uttar Pradesh)	45,000/-
7.	Baghpat (Uttar Pradesh)	35,000/-



## PLACEMENTS

Every year the Training and Placement Cell (T&P Cell) at the university arranges for special soft-skill and such other training programmes for the students to hone their soft skills, co-curricular knowledge, enhance their level of confidence so as to make them interview ready. During the pandemic, the Training and Placement Cell has organized a number of webinars and online training sessions where not just the final year students but students across semesters have received the opportunity to interact with industry experts and understand the demands of professional life. Apart from the constant training sessions, conferences and webinars, the T&P Cell also arranges for summer internship programmes for students across disciplines.



## RECORD PLACEMENTS

**7127+**

JOB OFFERS  
Upto June 2021

**35 LPA**

HIGHEST PACKAGE  
(2020-21)

**617+**

COMPANIES VISITED  
Upto June 2021



# OUR RECRUITERS

- Bank of America
- 3 iPillar
- Accenture
- Accolite Software
- Actolap
- Adlroid
- Airtel
- Allied Analytics
- Amex India Pvt Ltd
- Amozon
- Anglo Eastern Shipping Management Singapore
- APC Air System Pvt Ltd.
- Ashok Leyland
- Bitwise
- Bluebird Solar Pvt Ltd
- Byjus
- Centlytics (Nspire)
- ClickLabs
- Codalien Technologies
- Codenation Solution LLP
- Coforge
- Cognizant
- Colevit Technologies
- Curiouslyfly
- CVENT
- Dell Internship
- Digital Web Analytics Optimization
- Eleation
- EPAM
- Expert Grads
- Exposes Data Labs
- Fiat Chrysler Automobile
- Genpact
- Goldman Sachs
- Hansa Solutions
- HashedIn
- HCL
- Hexaware
- Hindustan Time
- Hitachi ABB Power Ltd
- Hitachi Consulting
- Hivo Technologies
- IBM
- ICON Resources
- IDS Infotech
- ILC Group of Companies
- Immortal Technologies
- Inszoom
- JKTechnosoft
- JMAN Group
- Josh Technology (P) Ltd.
- Juspay Techonologies Pvt Ltd.
- Just Dial
- KEN 42
- Kickstart
- Kony Stay Ahead
- KPIT
- Lead Squared
- LendingKart
- LG Soft India
- Lido Learning
- Mad Educators
- MasTree
- Med Play
- Media Net
- Mediology Software Pvt Ltd
- Merkle | Sokrati
- Microsoft
- Mu Sigma
- Mustangs E Services Pvt Ltd.
- Naggaro
- NCR Corporation Pvt Ltd
- New Age Instruments & Materials pvt Ltd.
- Newgen
- NI Systems India
- Nokia
- NTT Data
- Number Theory System Pvt Ltd
- OLA Cabs
- Omics Group
- One Direct
- Online Sales. AI
- Opentext
- Optimus Information
- Optimus Software
- PayPal
- Paytm
- Planet Spark
- Posterity Consulting
- Practo
- Quantiphi
- Quest Global
- Reliance Industries (Pool Campus)
- Royal Enfield
- Samsung India
- Servetel
- Siora Surgicals
- Synopsys (India ) Pvt Ltd.
- Tata Consultancy Services
- Tata Technologies
- TCS Digital
- TDI Infracorp.Ltd.
- Tech Mahindra
- TekSysens
- Tenovia
- Texas Instruments
- Thomson Digital
- Timex Group Precision Engg Ltd
- Uber India
- Unthinkable Solutions
- UpGrad
- Virtous
- Virtusa
- Vodafone GET
- We Make Scholars
- Whitehat Junior
- Wiley-mthree
- Wipro
- Xpressbees
- Zone Media Pvt Ltd
- Zykr



# VARIOUS COMMITTEES



# ANTI RAGGING COMMITTEE

Sr. No	Name	Designation
1.	Prof. Rakesh Dube	Dean (Science & Humanities) – Chairman
2.	Dr. Kavita Dahiya	Assoc. Prof. (Management) – Member
3.	Dr. Arpana Vibhuti	Assoc. Prof. (Biotechnology) – Member
4.	Dr. Pawam Kr. Singh	Assoc. Prof. (ECE) – Member Secretary
5.	Dr. Neeraj Dahiya	Asst. Prof. (CSE) – Member
6.	Mr. Nitin Dahiya	Asst. Prof. (Civil) – Member
7.	Dr. Deepika Yadav	Asst. Prof. (EEE) – Member
8.	Dr. Ashok Kumar Mishra	Asst. Prof. (ME) – Member
9.	Dr. Neelu Chaudhary	Asst. Prof. (Mathematics) – Member
10.	Dr. Debosmita Biswas	Asst. Prof. ( English) – Member
11.	Dr. Upendra Singh	Warden (Boys Hostel) – Member
12.	Mr. Sanjay Antil	Parent Representative – Member
13.	Mr. Vivek Ranjan Chaudhary	Parent Representative – Member
14.	Ms.Kusum Dalal	Student Representative – Member
15.	Nominated Administrative Member, Sonipat	Haryana Government Representative – Member
16.	S.H.O Rai , Sonapat	Local Police Representative – Member
17.	Mr. V. P. Sharma	Road & Safety Representative – Member
18.	Mr. Sanjeev Dixit	Media Representative – Member
19.	Mr. Virender Duhan (Advocate)	Abhiyan Foundation Trust ,NGO Representative Sonapat – Member



# GRIEVANCE REDRESSAL COMMITTEE

Sr. No	Name	Designation
1.	Prof. V. Samuel Raj	Dean (Academic Affairs) – Chairman
2.	Prof. Rakesh Dube	Dean (Basic Science, Humanities and Social Sciences) – Member
3.	Prof. Komal Audichya	Professor (Law) – Member
4.	Mr. Manoj Madhavan Kutty	Director (IR and Administration) – Member
5.	Dr. Neeraj Chandra	Medical Superintendent –PRIMSR- Member
6.	Prof. Sanjay Kumar	Professor (CSE) – Nodal Officer

# INTERNAL COMPLAINTS COMMITTEE TO PREVENT SEXUAL HARASSMENT AT WORKPLACE

Sr. No	Name	Designation
1.	Prof. Komal Audichya	Professor (Law) - Chairperson
2.	Mr. Manoj Madhavan Kutty	Director (IR and Administration) - Member
3.	Dr. Poornima	Senior Medical Officer - PRIMSR Hospital
4.	Dr. P. C. Kishore Raja	Professor ( ECE) - Member
5.	Dr. M. Mohan	Associate Professor (CSE) – Member
6.	Dr. Neelu Chaudhary	Assistant Professor (Mathematics) - Member Secretary
7.	Ms. Preeti Dabas	Assistant Professor (Economics) – Member
8.	Ms. Vishnupriya Arora	Student Representative - Member
9.	Ms. Nivadita Tiwari	Student Representative - Member
10.	Mr. Virender Duhan (Advocate)	Abhiyan Foundation Trust, NGO Representative Sonapat - Member



# DISCIPLINARY COMMITTEE

Sr. No	Name	Designation
1.	Prof. Rakesh Dube	Dean (Basic Science, Humanities and Social Sciences) – Chairman
2.	All Head of Departments	Members
3.	Hostel Warden (Boys Hostel)	Member
4.	Hostel Warden (Girls Hostel)	Member
5.	Dr. M. Mohan	Associate Professor (CSE) – Member
6.	Dr. Kavita Singh	Associate Professor (Management) – Member
7.	Class Representative (CR of the batch/section to which the student who has allegedly committed indiscipline, belongs)	Member
8.	Dr. Puneet Goswami	Professor (CSE) – Convener







**SRM**  
University

# INDUSTRY FOCUSED CAREER READY



## LEARN. LEAP. LEAD

### SRM University Delhi-NCR, Sonapat

39, Rajiv Gandhi Education City, Delhi-NCR, Sonapat - 131029, Haryana, INDIA

**Phone:** 0130-2203700-708 | **Mobile:** +91-8816033301/02/03/04/05/06

**Email:** admissions@srmuniversity.ac.in


**Website:** www.srmuniversity.ac.in, www.srmuh.com



**SRM**  
UNIVERSITY  
DELHI-NCR, SONEPAT

 /SRMUniversityDelhiNCR

 /SRMH\_University

 /company/srm-university-haryana

 /SRMUniversityDelhiNCR

 /srmuniversitydelhincr



**Admission Helpline No. 9541779883**

**Toll Free No. 1800 180 1216**