

**EXTRACTS OF RESOLUTIONS PASSED BY THE BOARD OF  
MANAGEMENT AT THE MEETING HELD ON 16.12.2021**

I, the undersigned, hereby certify that the following is a true and correct extract of the minutes / resolutions passed by the Board of Management of the University at its Meeting held on 16.12.2021 and is in force and effect:

**Item No: 8**

To consider the recommendation(s) for the feedback (academic session 2020-21) received from various stakeholders namely (i) students (ii) teachers (iii) employers (iv) alumni (v) parents to review and approve the syllabi of the various academic programmes conducted at different faculties of the University during the Academic Year 2020-21.

**Resolution No. 8 of 30<sup>th</sup> BoM Meeting dtd. 16.12.2021**

Resolved that the recommendation(s) for the feedback (academic session 2020-21) received from various stakeholders namely (i) students (ii) teachers (iii) employers (iv) alumni (v) parents for the various academic programmes conducted at different faculties of the University during the session 2020-21, is hereby approved.



**Prof. V. Samuel Raj**  
**Registrar**  
**SRM University Delhi-NCR, Sonapat.**



# Curriculum Feedback Analysis

## (A) Stakeholder: Student

### Student Feedback Analysis 2020-21

TOTAL NUMBER OF RESPONSES : 1603

FS Threshold: 75

S.No.	Attributes	A	B	C	D	E	Feedback
		Promoters		Passives	Detractors		Score
		No. of Responses	No. of Responses	No. of Responses	No. of Responses	No. of Responses	FS
1	There are relevant courses offered by the Programme.	726	629	142	59	43	78.17
2	Did the Course content was relevant enough to offer employment opportunities?	760	511	205	71	46	71.99
3	Course Syllabi developed relevant technical skills and inspired curiosity and innovative thinking.	612	624	257	66	37	70.68
4	Allocation of Credit hours to each of the Courses are adequate.	664	614	212	56	48	73.24
5	Listed Course text book / Reference book are relevant and adequate.	664	641	212	43	28	74.87
6	Each course objective and course learning outcomes are defined and developed.	715	602	135	90	41	73.99
7	Whether assessment is well design for all Courses ?	729	598	145	77	42	75.36
8	Career advancement and holistic learning are enhanced by Programme Curriculum.	644	638	229	37	35	75.48
9	Multi-disciplinary learning is fostered in Programme Curriculum.	654	627	242	37	27	75.92
10	Course Syllabi ensure Real life applications as well as theoretical conceptual understanding	624	647	227	54	36	73.67

A – Strongly Agree, B – Agree, C – Neutral, D = Disagree, E – Strongly disagree

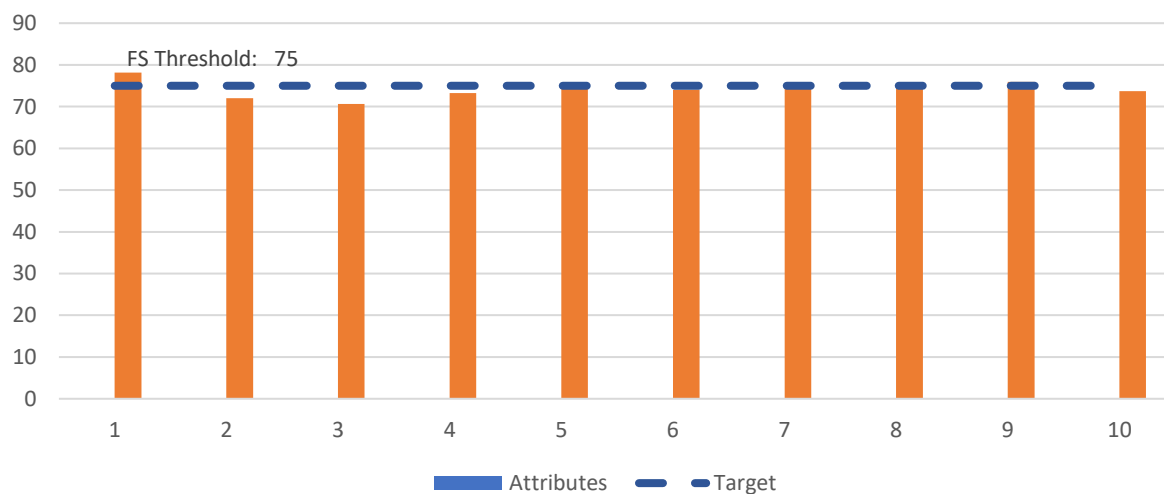
## SRM UNIVERSITY DELHI-NCR, SONEPAT

Established under Haryana Private Universities Act 2006 as amended by Act no.8 of 2013 and recognized by UGC u/s 2(f) of UGC Act, 1956

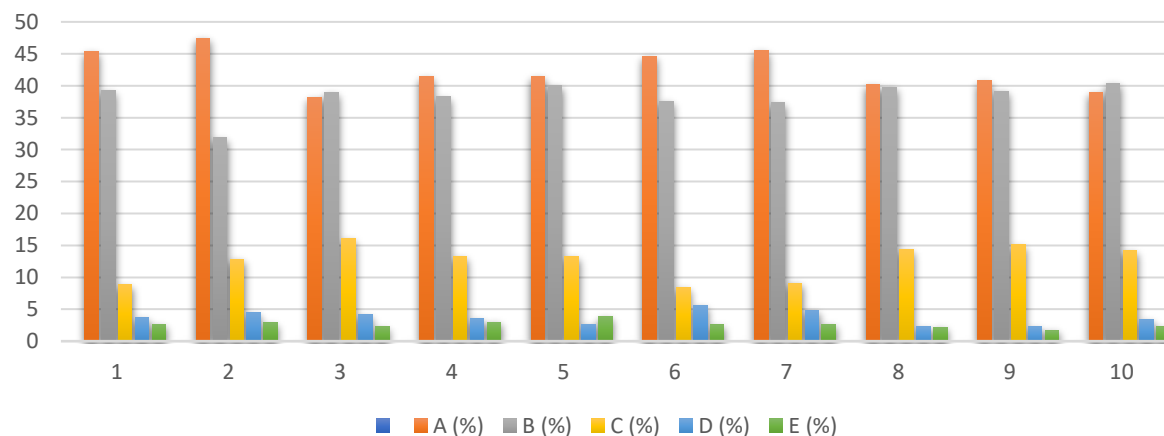
39, Rajiv Gandhi Education City, Delhi-NCR, Sonapat-131029, Haryana (India)

Tel : 0130-2203700-01 | Tollfree : 1800 180 1216 | Website : [www.srmuniversity.ac.in](http://www.srmuniversity.ac.in)

### FS Score Chart



### Percentage Chart



## SRM UNIVERSITY DELHI-NCR, SONEPAT

Established under Haryana Private Universities Act 2006 as amended by Act no.8 of 2013 and recognized by UGC u/s 2(f) of UGC Act, 1956

39, Rajiv Gandhi Education City, Delhi-NCR, Sonapat-131029, Haryana (India)  
Tel : 0130-2203700-01 | Tollfree : 1800 180 1216 | Website : [www.srmuniversity.ac.in](http://www.srmuniversity.ac.in)



## (B) Stakeholder: Faculty

### Faculty Feedback Analysis 2020-21

TOTAL NUMBER OF RESPONSES : 167

FS Threshold: 80

TOTAL NUMBER OF RESPONSES : 107				FS Threshold: 60			
S.No.	Attributes	A	B	C	D	E	Feedback
		Promoters		Passives	Detractors		Score
		No. of Responses	No. of Responses	No. of Responses	No. of Responses	No. of Responses	FS
1	The course content designed is relevant to the needs of industry.	93	60	9	5	0	88.62
2	The course content has enough scope for development of analytical, logical and critical thinking.	87	59	16	4	1	84.43
3	The Curriculum gives wide range of electives under Choice Based Credit System.	85	67	13	2	0	89.82
4	Programme learning outcomes are achieved through various courses included in the Programme.	92	56	17	1	1	87.43
5	There is an adequate number of reference reading material and e – resource available under various courses.	77	79	7	3	1	90.54
6	The assessment parameters effectively measure the performance of the students and areas for improvement under each course.	69	75	22	1	0	85.63
7	The programme curriculums facilitate multidisciplinary learning.	81	72	11	2	1	89.82
8	There is adequate academic freedom and opportunities available for designing, developing, and improving curriculum and evaluation parameters.	77	64	24	1	1	83.23
9	The University has enough resources at disposal for effective delivery of	75	73	17	2	0	87.43

## SRM UNIVERSITY DELHI-NCR, SONEPAT

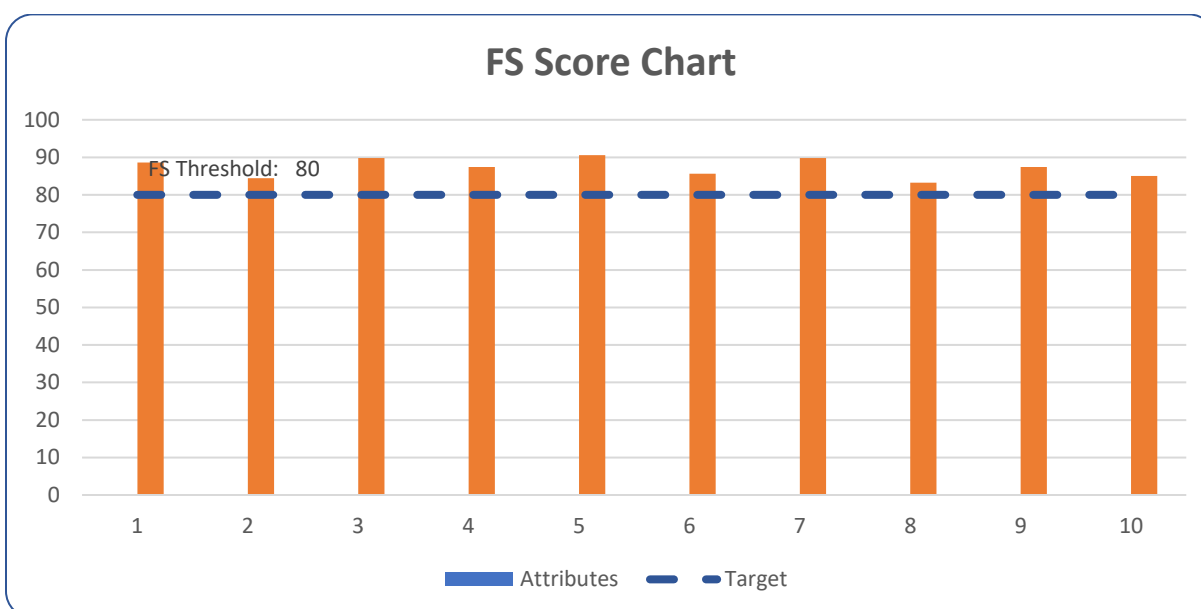
Established under Haryana Private Universities Act 2006 as amended by Act no.8 of 2013 and recognized by  
UGC u/s 2(f) of UGC Act, 1956

39, Rajiv Gandhi Education City, Delhi-NCR, Sonapat-131029, Haryana (India)  
Tel : 0130-2203700-01 | Tollfree : 1800 180 1216 | Website : [www.srmuniversity.ac.in](http://www.srmuniversity.ac.in)



	programme curriculums (computer Labs, Projector, Laptops, Online Resources etc).						
10	Learning through experience and lifelong learning is an integral part of the programme curriculum.	74	70	21	1	1	<b>85.03</b>

A – Strongly Agree, B – Agree, C – Neutral, D = Disagree, E – Strongly disagree



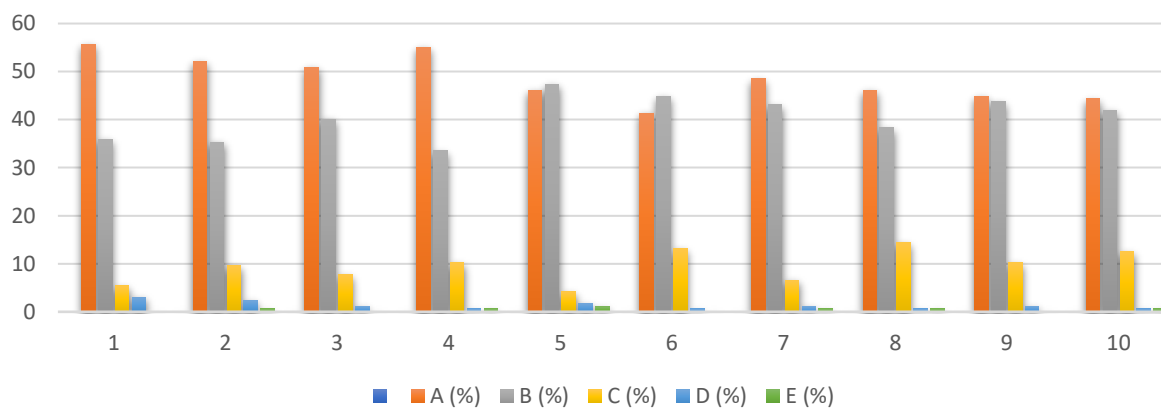
## SRM UNIVERSITY DELHI-NCR, SONEPAT

Established under Haryana Private Universities Act 2006 as amended by Act no.8 of 2013 and recognized by  
UGC u/s 2(f) of UGC Act, 1956

39, Rajiv Gandhi Education City, Delhi-NCR, Sonapat-131029, Haryana (India)  
Tel : 0130-2203700-01 | Tollfree : 1800 180 1216 | Website : [www.srmuniversity.ac.in](http://www.srmuniversity.ac.in)



**Percentage Chart**



## SRM UNIVERSITY DELHI-NCR, SONEPAT

Established under Haryana Private Universities Act 2006 as amended by Act no.8 of 2013 and recognized by  
UGC u/s 2(f) of UGC Act, 1956

39, Rajiv Gandhi Education City, Delhi-NCR, Sonapat-131029, Haryana (India)  
Tel : 0130-2203700-01 | Tollfree : 1800 180 1216 | Website : [www.srmuniversity.ac.in](http://www.srmuniversity.ac.in)

## (C) Stakeholder: Alumni

### Alumni Feedback Analysis 2020-21

TOTAL NUMBER OF RESPONSES: 261

FS Threshold: 70

S.No.	Attributes	A	B	C	D	E	Feedback
		Promoters		Passives	Detractors		Score
		No. of Responses	No. of Responses	No. of Responses	No. of Responses	No. of Responses	FS
1	The courses included in the curriculum have helped in the professional growth.	101	95	55	7	3	71.26
2	Programme curriculum was relevant to the industry.	104	87	54	6	9	67.43
3	Outcome-based education practice was implemented by the University.	122	83	40	12	4	72.41
4	The curriculum has enabled enhancement of performance at workplace.	127	93	19	17	5	75.86
5	The courses have benefited in improving employability skills.	93	124	22	19	3	72.89
6	The courses had a balance between applied, participatory, and experiential learning.	112	79	58	7	5	68.58
7	The domain specific knowledge gained during the programme helped in solving challenging problems at workplace.	94	104	46	14	3	69.35
8	The courses helped in development of analytical, critical, problem-solving abilities.	88	114	43	13	3	71.26
9	Sufficient opportunities were provided by the University during the programme for Participation in extra/co-curricular activities for holistic development.	124	85	40	9	3	75.48

## SRM UNIVERSITY DELHI-NCR, SONEPAT

Established under Haryana Private Universities Act 2006 as amended by Act no.8 of 2013 and recognized by UGC u/s 2(f) of UGC Act, 1956

39, Rajiv Gandhi Education City, Delhi-NCR, Sonapat-131029, Haryana (India)

Tel : 0130-2203700-01 | Tollfree : 1800 180 1216 | Website : [www.srmuniversity.ac.in](http://www.srmuniversity.ac.in)



**SRM**  
UNIVERSITY  
DELHI-NCR, SONEPAT

10	Teaching-learning environment at the University was remarkable.	77	128	42	9	5	<b>73.18</b>
----	---	----	-----	----	---	---	--------------

A – Strongly Agree, B – Agree, C – Neutral, D = Disagree, E – Strongly disagree

## SRM UNIVERSITY DELHI-NCR, SONEPAT

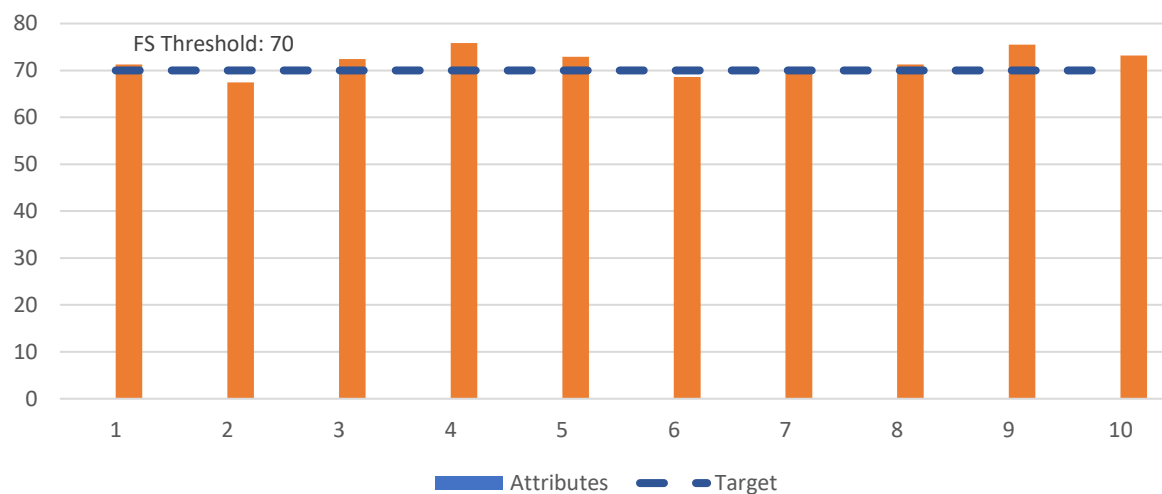
Established under Haryana Private Universities Act 2006 as amended by Act no.8 of 2013 and recognized by UGC u/s 2(f) of UGC Act, 1956

39, Rajiv Gandhi Education City, Delhi-NCR, Sonapat-131029, Haryana (India)  
Tel : 0130-2203700-01 | Tollfree : 1800 180 1216 | Website : [www.srmuniversity.ac.in](http://www.srmuniversity.ac.in)

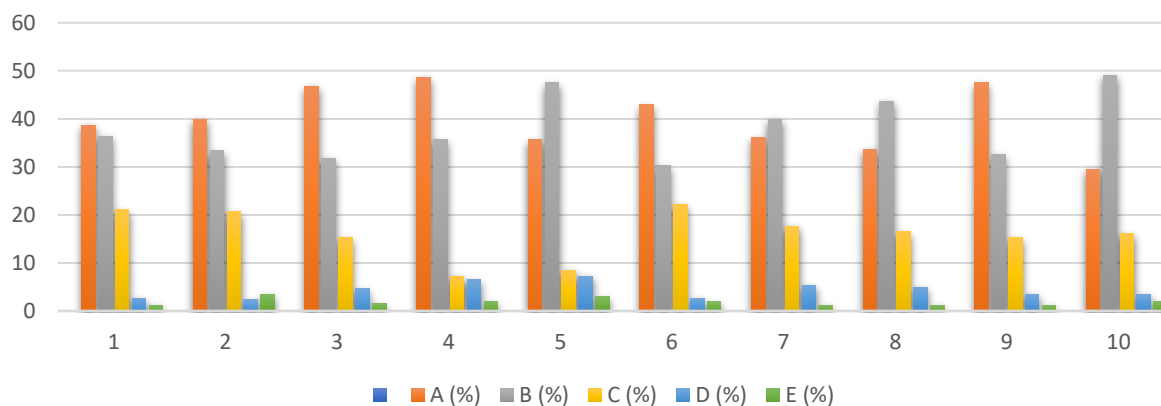




**FS Score Chart**



**Percentage Chart**



## SRM UNIVERSITY DELHI-NCR, SONEPAT

Established under Haryana Private Universities Act 2006 as amended by Act no.8 of 2013 and recognized by UGC u/s 2(f) of UGC Act, 1956

39, Rajiv Gandhi Education City, Delhi-NCR, Sonapat-131029, Haryana (India)  
Tel : 0130-2203700-01 | Tollfree : 1800 180 1216 | Website : [www.srmuniversity.ac.in](http://www.srmuniversity.ac.in)

## (D) Stakeholder: Employer

### Employer Feedback Analysis 2020-21

TOTAL NUMBER OF RESPONSES: 157

FS Threshold: 90

S.No.	Attributes	A	B	C	D	E	Feedback
		Promoters		Passives	Detractors		Score
		No. of Responses	No. of Responses	No. of Responses	No. of Responses	No. of Responses	FS
1	How far the courses meet the requirements of the industry?	97	50	10	0	0	93.63
2	Are the students able to transfer skills from courses included in the Programme to work place?	101	37	19	0	0	87.90
3	Does the specialized curriculum help students to attain excellence in their career?	121	30	6	0	0	96.18
4	Do the students demonstrate enough soft skills and technical skills needed by the job?	88	65	4	0	0	97.45
5	Do the students demonstrate adequate critical thinking and problem-solving abilities?	70	81	6	0	0	96.18
6	How far the training and internship completed by the students help in understanding the roles and responsibilities of the work place?	93	59	5	0	0	96.82
7	The curriculum has a balance of discipline specific courses, basic sciences, Humanities, and Management courses.	91	58	8	0	0	94.90
8	Do the students demonstrate the adequate managerial / leadership qualities and professional ethics?	88	67	2	0	0	98.73
9	Do the students have the potential to engage in continuous learning and	78	68	11	0	0	92.99

## SRM UNIVERSITY DELHI-NCR, SONEPAT

Established under Haryana Private Universities Act 2006 as amended by Act no.8 of 2013 and recognized by UGC u/s 2(f) of UGC Act, 1956

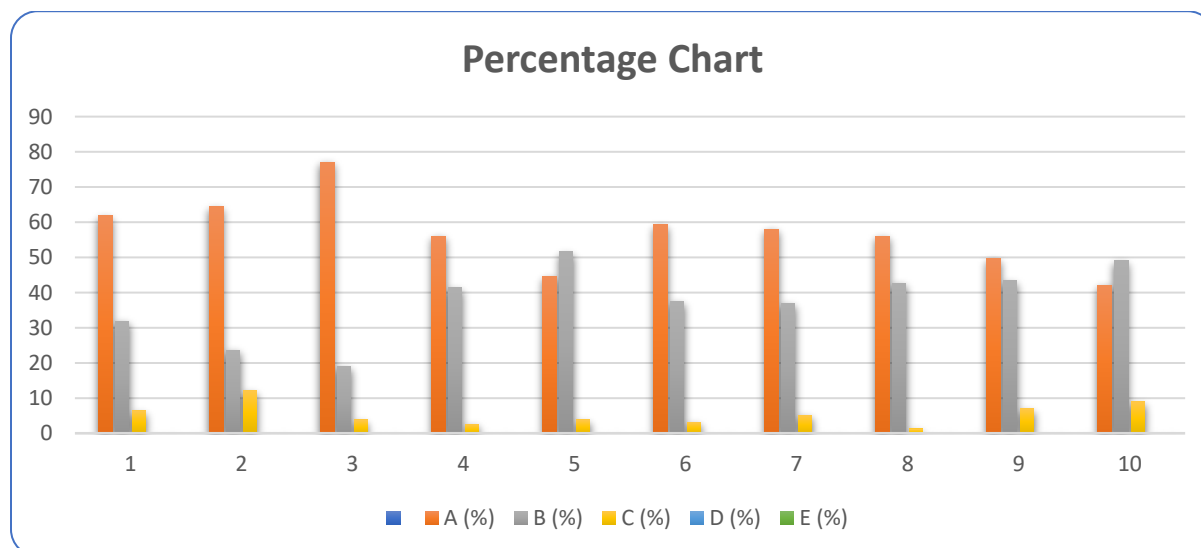
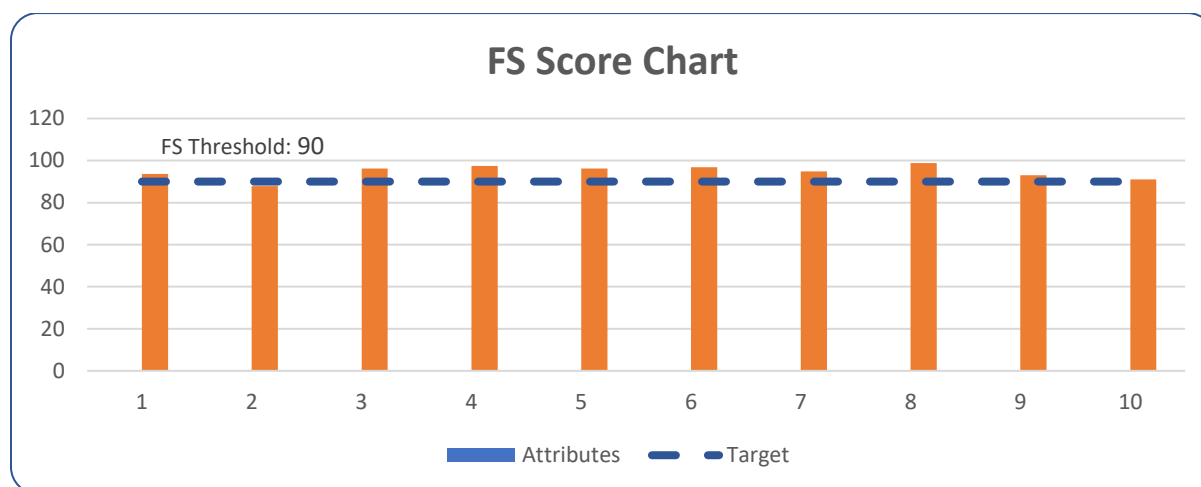
39, Rajiv Gandhi Education City, Delhi-NCR, Sonapat-131029, Haryana (India)

Tel : 0130-2203700-01 | Tollfree : 1800 180 1216 | Website : [www.srmuniversity.ac.in](http://www.srmuniversity.ac.in)



	up gradation of their knowledge and skills?						
10	Does the revised curriculum meet the emerging needs of the industry?	66	77	14	0	0	<b>91.08</b>

A – Strongly Agree, B – Agree, C – Neutral, D = Disagree, E – Strongly disagree



## SRM UNIVERSITY DELHI-NCR, SONEPAT

Established under Haryana Private Universities Act 2006 as amended by Act no.8 of 2013 and recognized by  
UGC u/s 2(f) of UGC Act, 1956

39, Rajiv Gandhi Education City, Delhi-NCR, Sonepat-131029, Haryana (India)  
Tel : 0130-2203700-01 | Tollfree : 1800 180 1216 | Website : [www.srmuniversity.ac.in](http://www.srmuniversity.ac.in)

## (E) Stakeholder: Parents

### Parents Feedback Analysis 2020-21

TOTAL NUMBER OF RESPONSES: 240

FS Threshold: 75

S.No.	Attributes	A	B	C	D	E	Net Promoter
		Promoters		Passives	Detractors		Score
		No. of Responses	No. of Responses	No. of Responses	No. of Responses	No. of Responses	FS
1	The infrastructural facilities (library, hostel, Sports) at the university are excellent.	67	98	48	2	2	74.19
2	The academic skills and knowledge of the faculty is satisfactory.	57	118	33	6	3	76.50
3	Sufficient resources both academic and nonacademic are available for the students.	94	83	24	11	5	74.19
4	The authorities are easily approachable for any queries and problems.	83	108	6	11	9	78.80
5	Extra-classes are provided to the learners on a requirement basis.	112	68	27	7	3	78.34
6	The students are given enough exposure as far as career-orientation is concerned.	91	76	45	4	1	74.65
7	The curriculum will make the learner employable and industry ready.	97	93	6	18	7	76.04
8	The university focuses on extra-curricular and sport activities and treats these as an essential part of holistic learning.	81	87	43	5	1	74.65
9	The university campus is a safe and secure place for learners.	97	75	34	8	3	74.19
10	There is a positive change in the behaviour of the learner after joining the university.	106	71	29	11	0	76.50

A – Strongly Agree, B – Agree, C – Neutral, D = Disagree, E – Strongly disagree

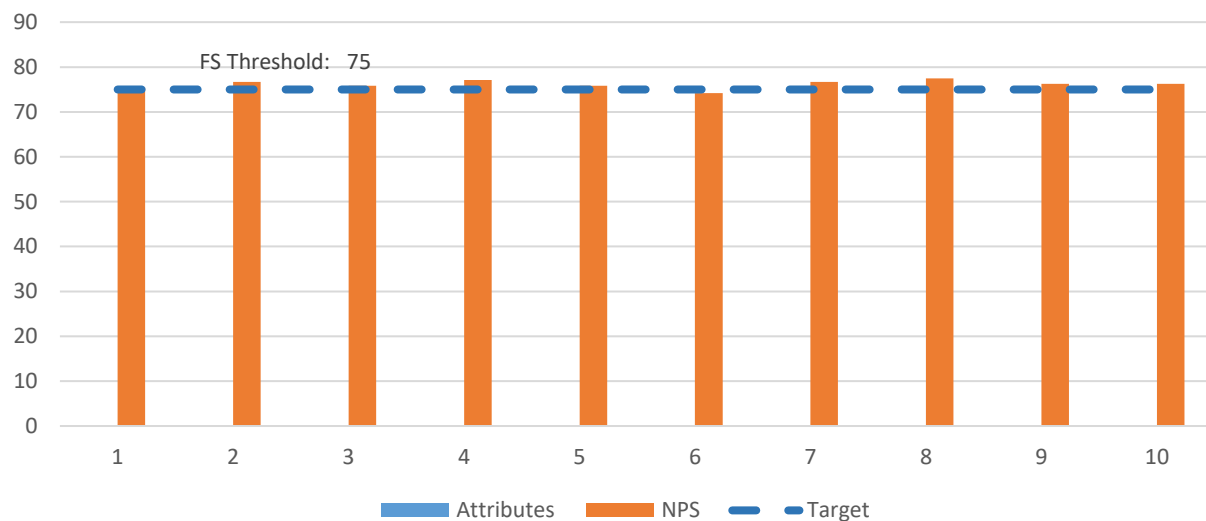
## SRM UNIVERSITY DELHI-NCR, SONEPAT

Established under Haryana Private Universities Act 2006 as amended by Act no.8 of 2013 and recognized by UGC u/s 2(f) of UGC Act, 1956

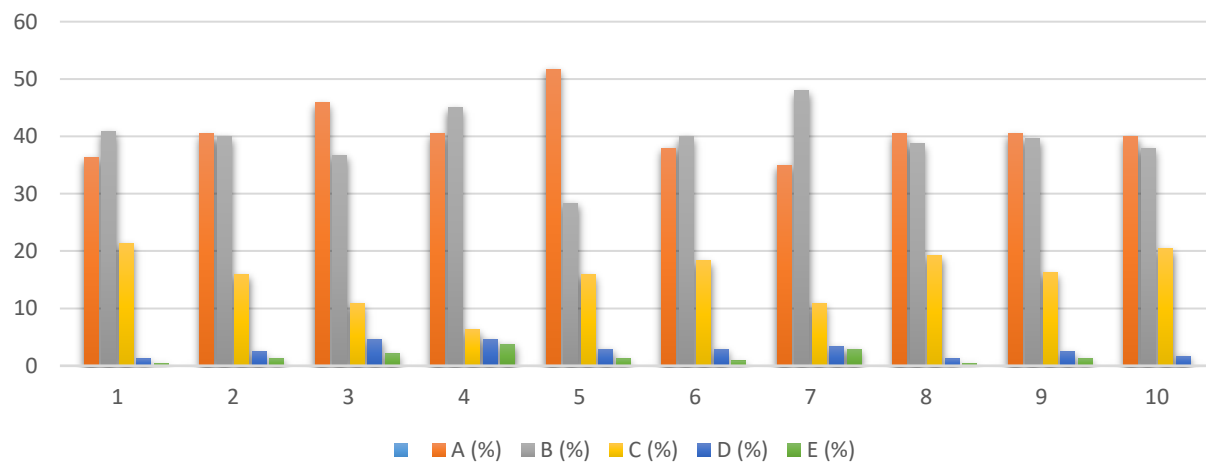
39, Rajiv Gandhi Education City, Delhi-NCR, Sonapat-131029, Haryana (India)

 Tel : 0130-2203700-01 | Tollfree : 1800 180 1216 | Website : [www.srmuniversity.ac.in](http://www.srmuniversity.ac.in)

### FS Score Chart



### Percentage Chart



## SRM UNIVERSITY DELHI-NCR, SONEPAT

Established under Haryana Private Universities Act 2006 as amended by Act no.8 of 2013 and recognized by UGC u/s 2(f) of UGC Act, 1956

39, Rajiv Gandhi Education City, Delhi-NCR, Sonapat-131029, Haryana (India)

Tel : 0130-2203700-01 | Tollfree : 1800 180 1216 | Website : [www.srmuniversity.ac.in](http://www.srmuniversity.ac.in)

## Action Taken Report - 2020-21

### (A) Stakeholder: Student

#### Student Feedback suggestions and action taken report 2020 – 21

S.No	Suggestions	Action Taken
1.	Internal assessment to be more intensive, focus to be given on assignments, quizzes, surprise tests.	Assessment parameters have been revised based on the recommendation of the academic council.
2.	Soft Skills courses required to be added.	Soft Skills courses made more rigorous and intensive.
3	Live Projects should be incorporated in Program Curriculum.	Live Projects incorporated in the Curriculum in the next academic session.
4	Multi-Disciplinary Learning should be advocated.	Students given more choice of electives.
5	Departmental clubs for Science and Humanities including Clubs for extra-curricular activities should be there.	Initiative taken to introduce different clubs and societies in different departments.
6	Core companies should be invited for placement.	Placement cell instructed to invite more core companies.

## SRM UNIVERSITY DELHI-NCR, SONEPAT

Established under Haryana Private Universities Act 2006 as amended by Act no.8 of 2013 and recognized by UGC u/s 2(f) of UGC Act, 1956

39, Rajiv Gandhi Education City, Delhi-NCR, Sonapat-131029, Haryana (India)  
Tel : 0130-2203700-01 | Tollfree : 1800 180 1216 | Website : [www.srmuniversity.ac.in](http://www.srmuniversity.ac.in)

## (B) Stakeholder: Faculty

### Faculty Feedback suggestions and action taken report 2020 – 21

S.No	Suggestions	Action Taken
1.	Opportunity should be given to faculties for collaborative research work with other universities.	Director Research should encourage faculty members for joint research activities with other universities.
2.	Provision of online teaching platform should be extended to all faculty members.	University procured CISCO Webex, Zoom with advance features and additional feature of Google Meet for recording online classes.
3	Student facing technical problems due to bandwidth issues should be sent recorded lectures.	Recorded Lectures shared with the students.
4	Internal-assessment parameters to be revised for Covid-pandemic period.	CoE shared revised internal assessment parameters with faculty members.
5	Methodology for online end-term examination should be discussed.	Instructions and protocols pertaining to online end-term examination shared with faculty members.
6	More number of webinars to be conducted.	Departments should invite eminent speakers on specialized domain to impart domain knowledge.
7	More certification courses from Coursera to be completed by faculty and students.	Coursera subscription was procured and was made available for faculty and students.

## SRM UNIVERSITY DELHI-NCR, SONEPAT

Established under Haryana Private Universities Act 2006 as amended by Act no.8 of 2013 and recognized by  
 UGC u/s 2(f) of UGC Act, 1956

39, Rajiv Gandhi Education City, Delhi-NCR, Sonapat-131029, Haryana (India)  
 Tel : 0130-2203700-01 | Tollfree : 1800 180 1216 | Website : [www.srmuniversity.ac.in](http://www.srmuniversity.ac.in)

### (C) Stakeholder: Alumni

#### Alumni Feedback suggestions and action taken report 2020 – 21

S.No	Suggestions	Action Taken
1.	Projects should be part of the curriculum.	Necessary action taken in the upcoming academic session.
2.	Unnecessary and outmoded courses should be removed from the curriculum.	Necessary action initiated by the Department.
3	Syllabus of few courses is very vast.	Departments instructed to remove irrelevant units and modules from the syllabi.
4	Necessary guidance to be given to publish research work in peer-reviewed journals and patents.	Workshop was organised by eminent academician on research methodology for more exposure on research publications and patents.
5	A platform to participate in various Hackathon and Ideathon to be extended to the students.	Necessary guidance (workshop) and financial support extended to students to participate in Hackathon and Ideathon.

## SRM UNIVERSITY DELHI-NCR, SONEPAT

Established under Haryana Private Universities Act 2006 as amended by Act no.8 of 2013 and recognized by  
UGC u/s 2(f) of UGC Act, 1956

39, Rajiv Gandhi Education City, Delhi-NCR, Sonapat-131029, Haryana (India)  
Tel : 0130-2203700-01 | Tollfree : 1800 180 1216 | Website : [www.srmuniversity.ac.in](http://www.srmuniversity.ac.in)



### (D) Stakeholder: Employer

#### Employer Feedback suggestions and action taken report 2020 – 21

S.No	Suggestions	Action Taken
1.	For better teamwork student should be given opportunity to work in real-time projects and if possible, it should be part of their curriculum.	The BoS as well as academic Council accepted the proposal and Live Projects is include das part of their curriculum to expose students to work in real life projects.
2.	More exposure to given to students with emphasis on current affairs and general knowledge to help them crack Group Discussion.	Humanities Student Club, “Chhaap” organised Model United Nations where more than 60 students participated and held discussion on various political and current affairs topics.
3	Training and Placement cell should organise a greater number of mock - interview sessions for final year students.	Training and Placement Cell has considered the suggestions and special sessions are organised on cracking interviews.
4	Students lack time management skills.	A module on Time management included in Soft Skills curriculum.
5	Online teaching program should have more focus on practical aspect.	Industrial experts are invited to deliver application-oriented talk.

## SRM UNIVERSITY DELHI-NCR, SONEPAT

Established under Haryana Private Universities Act 2006 as amended by Act no.8 of 2013 and recognized by  
UGC u/s 2(f) of UGC Act, 1956

39, Rajiv Gandhi Education City, Delhi-NCR, Sonapat-131029, Haryana (India)  
Tel : 0130-2203700-01 | Tollfree : 1800 180 1216 | Website : [www.srmuniversity.ac.in](http://www.srmuniversity.ac.in)

## (E) Stakeholder: Parents

### Parents Feedback suggestions and Action Taken Report 2020-21

S.No	Suggestions	Action Taken
1.	Teachers should use innovative and novel ideas and strategies in teaching online classes	A workshop would be conducted for faculty members for discussing interactive ideas and strategies for online classes
2.	Online classes are not effective because of low internet bandwidth in remote areas	Every department would conduct online/telephonic meeting with parents for discussing challenges in online teaching faced by the students. All recorded lectures will be deposited in the University LMS portal which can be retrieved by the student at any time.
3.	The University should plan more games, and interactive activities for students	Provision for online interactive and extra-curricular activities planned during Covid -19 era.
4.	Students are facing mental health issues	All mentors to conduct special mentoring sessions with mentees and discussed challenges related to mental health and well-being
5.	Syllabus should be revised in CSE core branch	Syllabus of core CSE along with all specializations revised through BoS

*Manish Bhatia*

**IQAC Coordinator**

**SRM UNIVERSITY DELHI-NCR, SONEPAT**

Established under Haryana Private Universities Act 2006 as amended by Act no.8 of 2013 and recognized by

UGC u/s 2(f) of UGC Act, 1956

39, Rajiv Gandhi Education City, Delhi-NCR, Sonapat-131029, Haryana (India)

Tel : 0130-2203700-01 | Tollfree : 1800 180 1216 | Website : [www.srmuniversity.ac.in](http://www.srmuniversity.ac.in)