

SRM UNIVERSITY DELHI-NCR
SONEPAT, HARYANA



SRM
UNIVERSITY
DELHI-NCR, SONEPAT

STRATEGIC PLAN
2019-2024

ABOUT THE UNIVERSITY

SRM University Delhi-NCR, Sonapat (SRMUH) has been established under the Haryana Private Universities Act, 2006 (as amended by Haryana Act No. 8 of 2013). SRM University Delhi-NCR, Sonapat aims to emerge as a leading world-class University that creates and disseminates knowledge upholding the highest standards of instruction in Engineering, Technology, Sciences, Humanities, Medicine, Health Sciences, Law and Management Studies. It carries an ideology rooted in academic excellence and with a strong passion to attain the highest standards in Education and Research. Along with academic excellence and skills, the University curriculum integrates experiential learning with analytical, critical, problem-solving and social skills that would ensure graduates to meet the national and the global demands.

It includes 68 programmes spread across six Faculties at UG, PG and Doctoral levels. It strives to emerge as the most preferred higher educational destination in the Delhi-NCR region to offer courses that are forward-looking, cutting-edge, independently sponsored, and interdisciplinary & multidisciplinary in nature.

Research is an integral part of any quality-conscious institution and SRMUH strongly believes in it. To encourage excellence in research, the University maintains a well-defined Research & Development (R&D) policy. It supports the research environment by encouraging research scholars and faculties to undertake research projects and consultancy, leading to the publication of papers and patents under a well-structured R&D Cell. Funded research initiatives also occupy a priority, and research grants in the form of seed money is provided to students and faculty.

The IQAC of the University ensures quality assurance and its decisions are implemented for further necessary action. The University gives importance to all spheres of student life; be it academic or non-academic, so as to ensure holistic development. The students are motivated to participate in extra-curricular/ co-curricular activities like National Service Scheme (NSS), National Cadets Corps (NCC), Samavesh Sports, Aagaaz freshers' day, PRISMA cultural event, etc. The students are also mentored through the mentor-mentee system. Along with human values, a feeling of social responsibility, gender sensitisation, sustainable business practices, and environmental awareness are also embedded into the curriculum.

The University provides advanced IT and academic infrastructure along with learning resources in the form of a fully air-conditioned and Wi-Fi-enabled campus, ICT-enabled lecture halls, interactive LED-screens in the conference hall, a Learning Management System (LMS), a digital library, etc.

The University is committed to promote national and international level collaborations in academic, research, employability and entrepreneurship. The University encourages its faculty to actively participate in collaborations, and further provide effective impetus back to the students. The partnership with different organizations have contributed towards achieving many of the objectives of the University.

VISION of the University

SRM University Delhi-NCR, Sonapat, Haryana aims to emerge as a leading world-class university that creates and disseminates knowledge upholding the highest standards of instructions in Medicine & Health Sciences, Engineering & Technology, Management, Law, Science and Humanities. Along with academic excellence and skills, our curriculum imparts integrity and social sensitivity to mould our graduates who may be best suited to serve the nation and the world.

MISSION of the University

To create a diverse community campus that inspires freedom and innovation.

To promote excellence in educational and skill development processes.

To continue to build productive international alliances.


To explore optimal development opportunities available to students and faculty.

To cultivate an exciting and rigorous research environment.

STRATEGIC PLAN OF THE UNIVERSITY

The University is committed to attain academic and research excellence. In pursuit of this, the University possesses a five-year strategic plan considering the futuristic challenges and opportunities. A task group of key stakeholders engaged itself in a fruitful exercise of drafting, developing, and documenting the University's futuristic roadmap in the form of the Strategic Plan. This strategic plan not only defines the goals of the University but also depicts the combined ideas and efforts which are essential to sustenance of the University.

SRMUH is on its way towards implementing key features of existing and future industry needs. The University curriculum is transforming the Choice Based Credit System pattern to Academic Bank of Credits under an Institutional Development Plan (IDP) and adopt the National Higher Education Quality Framework (NHEQF) as per the directions of Statutory Authorities. Students and faculty are at the core of all decisions taken at the University, so is in this Strategic Plan. During the strategic plan discussions, the following SWOCs were identified:

SWOC Analysis			
Strength	Weakness	Opportunities	Challenges
<ul style="list-style-type: none">• Strong Legacy and Prominent national presence• Modern infrastructure for teaching, learning and research• Eco-friendly, gender and disability sensitive campus• Experiential learning and industry-academia collaboration• Active national/international collaborations/MoUs for quality research and academic outcomes 	<ul style="list-style-type: none">• Remoteness of location and non-availability of public transport system like the metro service has led to the non-attainment of optimal strength of students• International students in few programmes• Few international visiting faculty members	<ul style="list-style-type: none">• Further strengthening Alumni Connect• More National and International Collaborations for research• Utilization of UGC Swayam portal for MOOCs• Supporting Skill India, Make in India, Start-up India mission• Introduction of more employable UG/PG programmes	<ul style="list-style-type: none">• Keeping pace with global developments in higher education and research• Fast changing technology and pedagogical innovations• Making campus fully residential• Procuring funded projects, consultancies and generation of revenue• Making students pursue more courses through SWAYAM or other MOOCs platforms

For the year 2019-24, the University has decided to work in the following focus areas to ensure it moves in positive direction meeting the objectives enshrined in its VISION and MISSION:

- Academic Delivery
- Quality Assurance
- Academic and IT Infrastructure

- Research & Development
- Collaboration with the industry and academia
- Learning Resource Centre

Focus Area -1: Academic Delivery

Academic Delivery aims to achieve academic excellence through an interdisciplinary curriculum, blended teaching methods and technology-enabled learning environment. The students are prepared to think, act, and communicate critically, creatively, and successfully, in addition to understand the subject and deploying necessary skills.

The following strategies shall be followed to achieve excellence in Academic Delivery: -

- To strengthen the already-existing academic programme by enhancing course content considering international standards, theoretical breakthroughs, and industry requirements.
- To provide academic freedom and flexibility in designing innovative course curriculum and teaching-learning processes as per industry needs.
- To implement flexible teaching-learning processes through National Academic Depository (NAD) system and DigiLocker.
- To establish a well-designed and structured examination system with transparent assessment and evaluation process.
- To obtain regular feedback from stakeholders on the teaching-learning process, curriculum and administrative facilities to ensure quality control and overall student satisfaction.
- To attract, reward and retain talented workforce in ensuring quality in academics, research and administration.
- To effectively implement University R&D policy to encourage quality research in interdisciplinary & multidisciplinary areas.
- To undertake research through industry-academia collaborations focussing on practical problems and their real-world applications.

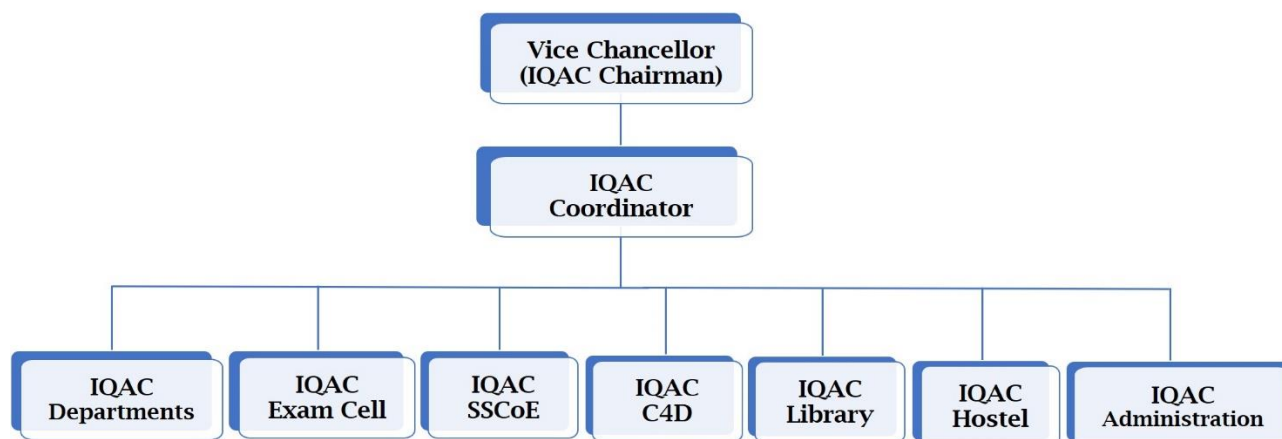
Focus Area – 2: Quality Assurance

To achieve excellence in academic, research, administration, sports and extension activities SRMUH has adopted the 5Qs (Quality Intake, Quality Delivery, Quality Assessment & Evaluation, Quality Outcome, Quality Placement), by ensuring regular monitoring of feedback received from various stakeholders. The objective of Quality Assurance is to establish standards, instruments, and processes for tracking and evaluating the teaching-learning

methodology in terms of guidelines and practises that align with the University's vision and mission. The University's strategy towards quality assurance is as follows:

- To strengthen the existing Internal Quality Assurance Cell (IQAC) at the University level as well as at the departmental level to ensure high quality teaching and learning environment.

Organization Structure of Internal Quality Assurance Cell (IQAC), SRMUH



- To design and execute a comprehensive plan for capacity building at academic and management levels by regularly conducting Faculty Development Programs (FDPs), Management Development Programs (MDPs), workshops, seminars, conferences, etc.
- To promote measures for institutional functioning towards quality enhancement through internalization of quality culture and institutionalization of best practices.

IQAC will drive the strategy towards securing NAAC Accreditations and NIRF Ranking within Top 100 institutions.

Focus Area – 3: Academic and IT Infrastructure

To emerge as one of the top-ranked Universities, academic and research facilities are required besides the intellectual investment of the University. To address these infrastructural needs, regular maintenance of existing facilities and constant upgradation of laboratories and related appliances is essential. The following would be the plan to augment the infrastructure and IT Infrastructure:

- To plan and construct advanced ICT-enabled classrooms across all disciplines, enhanced digital library facilities, new-age laboratories and collaboration centres with Secured and Hi-Speed Wi-Fi connectivity.

- To Complete the Academic Blocks and residential facilities for a greater number of students and faculty. This will attract more talent to the organisation.
- Landscaping and cleanliness of campus as per green environment policy for better health, bio-diversity and conducive environment to stakeholders and society.

The Information Technology and Knowledge Management (ITKM) Department of the University maintains its servers, firewall, ERP, telephony, internet, computing devices, electronic gadgets, applications, and information system. The infrastructure's ongoing support and proactive maintenance is necessary to cater the needs of the academic and administrative fraternity. The following strategies are designed to work on this focus area: -

- Provide advanced learning centres by providing 100% ICT-enabled classrooms, digital library facilities, virtual laboratories, and Hi-Speed Wi-Fi connectivity.
- To update various IT policies related to hardware asset management, usage, and purchase/replacement/disposal of telecommunication and computing / IT products bearing in mind the everchanging IT landscape. To be conscious about the e-waste management.
- To ensure seamless network connectivity in accordance with national standards required for blended teaching methodology involving interactive and ICT-enabled modern pedagogical techniques.

Focus Area 4: Research and Development

SRMUH during its strategic plan discussions realised that 'Research' forms an important element for growth of any University and accordingly one of the major focus areas have been decided as promoting Research & Development. Towards this end, the University shall take the following steps:

- Incentivise faculty through R&D and Consultancy Policy to undertake projects and consultancies to enhance research revenue as well as publication of research papers in niche areas.
- Incentivise faculty to publish papers in indexed journals
- Provide faculty and students with seed funding to promote research in collaboration or otherwise.
- Promote interdisciplinary & multidisciplinary research through collaborative approach with Industry and Academic institutions

- Employ a greater number of Doctoral Research Fellows as well as Ph.D. scholars

Focus Area -5: Collaboration with the Industry and Academia

The University promotes collaboration in academics, research and employability at national and international levels. It provides opportunities for students and faculty to understand and analyse the existing industry problems, and come up with sustainable and innovative solutions.

The plan to encourage active collaborations are as follows: -

- Joint collaborations with renowned academic institutions, research institutes, and industries to create possibilities for research projects and internships for students and faculty.
- To strengthen an international desk/ department to encourage global collaborations.
- Creating opportunities for credit transfers/ exchange programs for students through empanelment with Study in India (SII), EdCIL, etc.
- Exploring opportunities to start short-term, immersion and semester break programs with industry collaborations and cultural awareness.
- To strengthen the Alumni presence at Global and National level – in public and private organizations across diverse domains connected through the SRMUH Alumni Association (SRMUH AA).
- To promote faculty and student exchange and collaboration to enhance global reach

Focus Area – 6: Learning Resource Centre

Learning resource centre is an integral part of the University system, and their continuous improvement is vital for achieving academic excellence. The University is planning to implement the following to drive this goal: -

- To encourage contribution to knowledge-pool by developing new content and making it available through books, e-content and other learning resources.
- To create a conducive environment for growth and a wide range of information services for learning.
- To automate software(s)/ hardware(s) in library-related activities.
- To create disabled-friendly learning resource facilities

- To make effective use of plagiarism software(s) and encourage its use among the students and faculties.
- To create and drive efficient use of the Knowledge Management System
