

Curriculum Feedback Analysis

(A) Stakeholder: Student

Student Feedback Analysis 2022-23

TOTAL NUMBER OF RESPONSES : 2211						NPS Threshold: 77	
		A	B	C	D	E	Net Promoter Score NPS
		Promoters		Passives	Detractors		
S.No.	Attributes	No. of Responses strongly agreed	No. of Responses agreed	No. of Responses neutral	No. of Responses disagreed	No. of Responses strongly disagreed	
1	There are relevant courses offered by the Programme.	1005	778	347	40	41	76.98
2	Did the Course content was relevant enough to offer employment opportunities?	1119	721	243	92	36	77.43
3	Course Syllabi developed relevant technical skills and inspired curiosity and innovative thinking.	1226	631	219	74	61	77.88
4	Allocation of Credit hours to each of the Courses are adequate.	1143	709	239	93	27	78.34
5	Listed Course text book / Reference book are relevant and adequate.	1041	771	329	41	29	77.21
6	Each course objective and course learning outcomes are defined and developed.	1188	680	226	67	50	79.19
7	Whether assessment is well design for all Courses ?	1175	715	192	85	44	79.65
8	Career advancement and holistic learning are enhanced by Programme Curriculum.	1170	684	274	52	31	80.10
9	Multi-disciplinary learning is fostered in	1007	867	244	60	33	80.55

SRM UNIVERSITY DELHI-NCR, SONEPAT

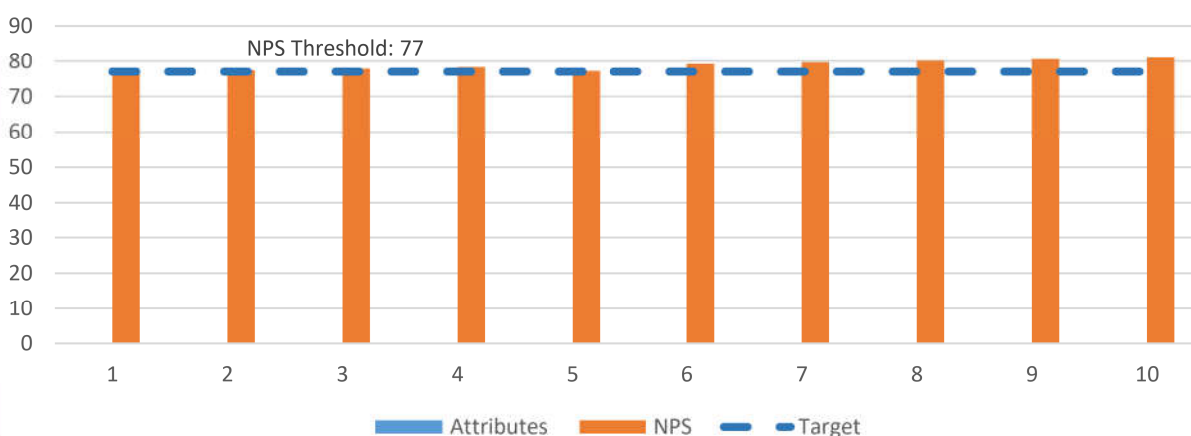
Established under Haryana Private Universities Act 2006 as amended by Act no.8 of 2013 and recognized by UGC u/s 2(f) of UGC Act, 1956

39, Rajiv Gandhi Education City, Delhi-NCR, Sonapat-131029, Haryana (India)

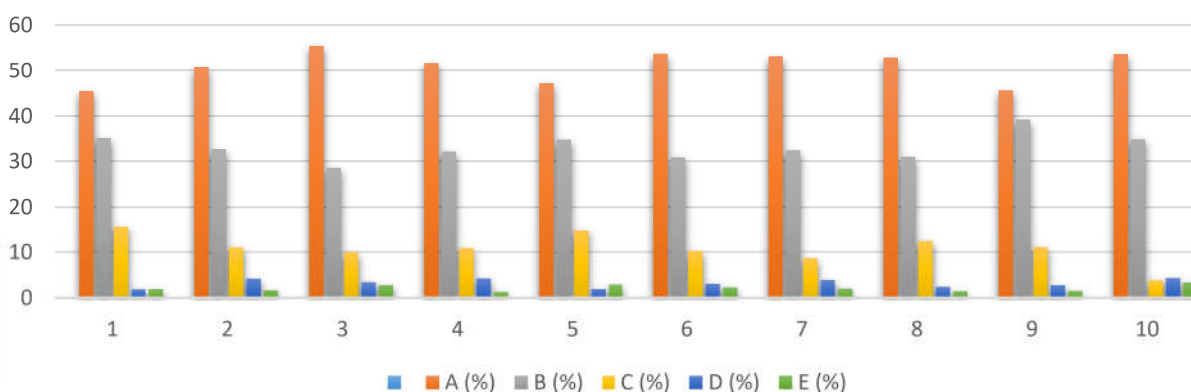
Tel : 0130-2203700-01 | Tollfree : 1800 180 1216 | Website : www.srmuniversity.ac.in

	Programme Curriculum.						
10	Course Syllabi ensure Real life applications as well as theoretical conceptual understanding	1186	773	84	95	73	81.00

NPS Score Chart



Percentage Chart



SRM UNIVERSITY DELHI-NCR, SONEPAT

Established under Haryana Private Universities Act 2006 as amended by Act no.8 of 2013 and recognized by UGC u/s 2(f) of UGC Act, 1956

39, Rajiv Gandhi Education City, Delhi-NCR, Sonapat-131029, Haryana (India)

Tel : 0130-2203700-01 | Tollfree : 1800 180 1216 | Website : www.srmuniversity.ac.in

(B) Stakeholder: Faculty

Faculty Feedback Analysis 2022-23

TOTAL NUMBER OF RESPONSES:186				NPS Threshold: 82			
S.No.	Attributes	A	B	C	D	E	Net Promoter Score (NPS)
		Promoters		Passives	Detractors		
		No. of Responses strongly agreed	No. of Responses agreed	No. of Responses neutral	No. of Responses disagreed	No. of Responses strongly disagreed	
1	The course content designed is relevant to the needs of industry.	92	67	25	1	1	84.23
2	The course content has enough scope for development of analytical, logical and critical thinking.	92	62	31	1	0	82.31
3	The Curriculum gives wide range of electives under Choice Based Credit System.	84	77	22	2	1	84.89
4	Programme learning outcomes are achieved through various courses included in the Programme.	85	72	27	1	1	83.48
5	There is an adequate number of reference reading material and e – resource available under various courses.	77	78	30	1	0	82.56
6	The assessment parameters effectively measure the performance of the students and areas for improvement under each course.	74	84	27	1	0	84.56
7	The programme curriculums facilitate multidisciplinary learning.	80	79	22	3	2	82.96
8	There is adequate academic freedom and opportunities available for designing, developing, and improving curriculum and evaluation parameters.	90	66	27	3	0	82.01

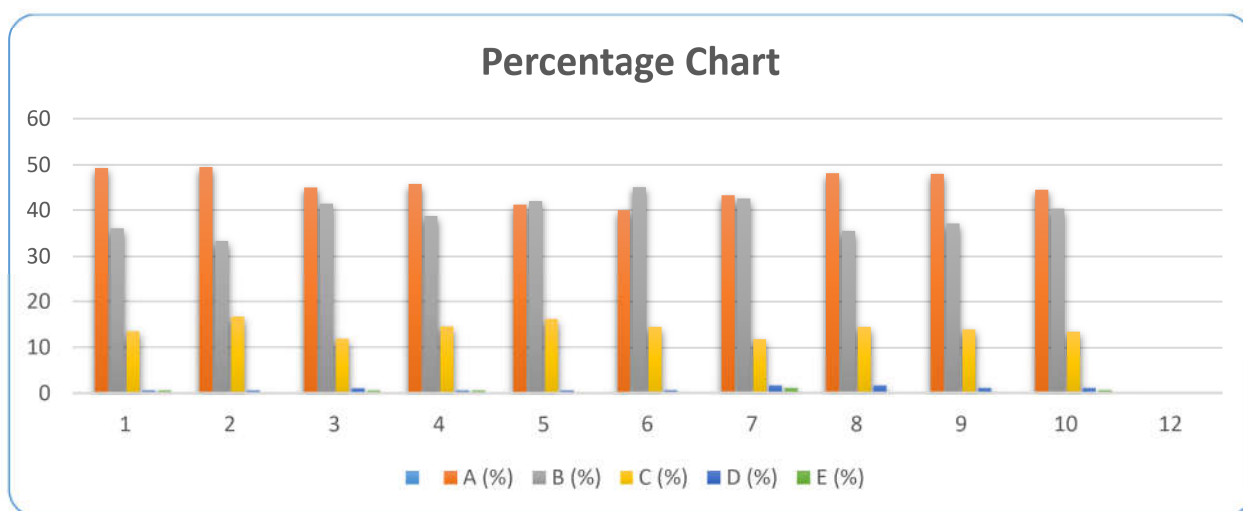
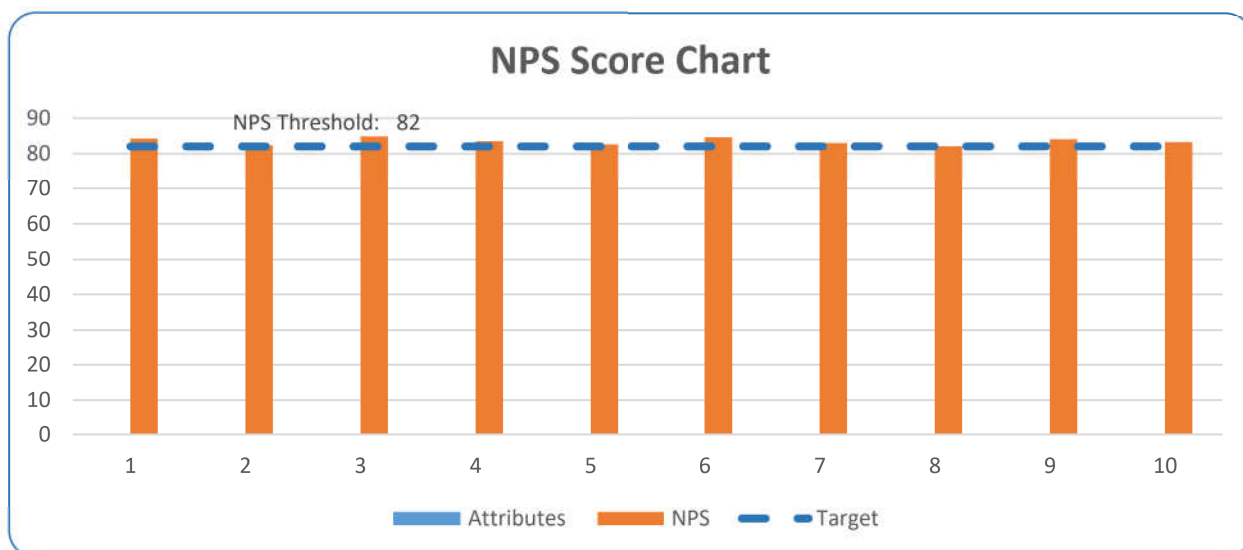
SRM UNIVERSITY DELHI-NCR, SONEPAT

Established under Haryana Private Universities Act 2006 as amended by Act no.8 of 2013 and recognized by UGC u/s 2(f) of UGC Act, 1956

39, Rajiv Gandhi Education City, Delhi-NCR, Sonapat-131029, Haryana (India)

Tel : 0130-2203700-01 | Tollfree : 1800 180 1216 | Website : www.srmuniversity.ac.in

9	The University has enough resources at disposal for effective delivery of programme curriculums (computer Labs, Projector, Laptops, Online Resources etc).	89	69	26	2	0	84.05
10	Learning through experience and lifelong learning is an integral part of the programme curriculum.	83	75	25	2	1	83.27



SRM UNIVERSITY DELHI-NCR, SONEPAT

Established under Haryana Private Universities Act 2006 as amended by Act no.8 of 2013 and recognized by UGC u/s 2(f) of UGC Act, 1956

39, Rajiv Gandhi Education City, Delhi-NCR, Sonapat-131029, Haryana (India)

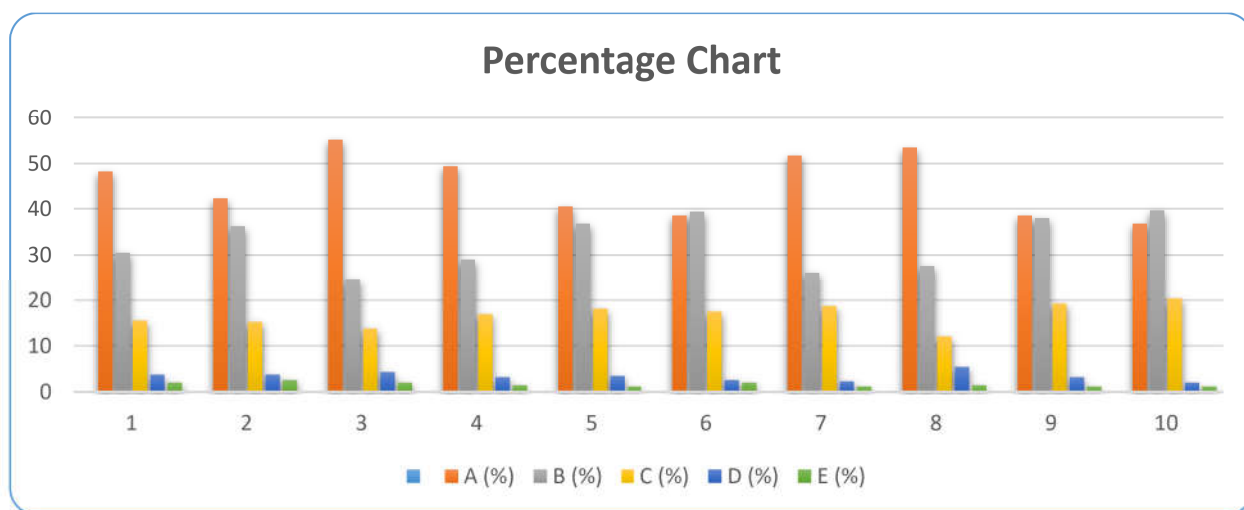
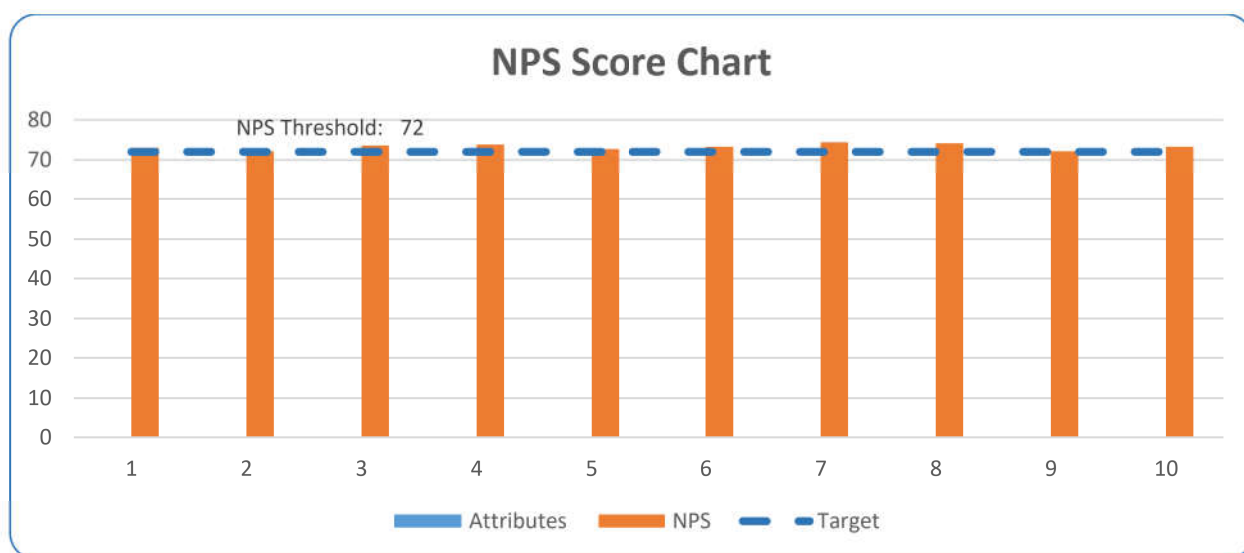
Tel : 0130-2203700-01 | Tollfree : 1800 180 1216 | Website : www.srmuniversity.ac.in

(C) Stakeholder: Alumni

Alumni Feedback Analysis 2022-23

TOTAL NUMBER OF RESPONSES:348					NPS Threshold: 72		
		A	B	C	D	E	Net Promoter Score (NPS)
		Promoters		Passives	Detractors		
S.No.	Attributes	No. of Responses strongly agreed	No. of Responses agreed	No. of Responses neutral	No. of Responses disagreed	No. of Responses strongly disagreed	
1	The courses included in the curriculum have helped in the professional growth.	168	106	54	13	7	72.99
2	Programme curriculum was relevant to the industry.	147	126	53	13	9	72.13
3	Outcome-based education practice was implemented by the University.	192	86	48	15	7	73.56
4	The curriculum has enabled enhancement of performance at workplace.	172	101	59	11	5	73.85
5	The courses have benefited in improving employability skills.	141	128	63	12	4	72.70
6	The courses had a balance between applied, participatory, and experiential learning.	134	137	61	9	7	73.28
7	The domain specific knowledge gained during the programme helped in solving challenging problems at workplace.	180	91	65	8	4	74.43
8	The courses helped in development of analytical, critical, problem-solving abilities.	186	96	42	19	5	74.14
9	Sufficient opportunities were provided by the University during the programme for Participation in extra/co-	134	132	67	11	4	72.13

	curricular activities for holistic development.						
10	Teaching- learning environment at the University was remarkable.	128	138	71	7	4	73.28



SRM UNIVERSITY DELHI-NCR, SONEPAT

Established under Haryana Private Universities Act 2006 as amended by Act no.8 of 2013 and recognized by
UGC u/s 2(f) of UGC Act, 1956

39, Rajiv Gandhi Education City, Delhi-NCR, Sonapat-131029, Haryana (India)

Tel : 0130-2203700-01 | Tollfree : 1800 180 1216 | Website : www.srmuniversity.ac.in

(D) Stakeholder: Employer

Employer Feedback Analysis 2022-23

TOTAL NUMBER OF RESPONSES:181					NPS Threshold: 92		
		A	B	C	D	E	Net Promoter Score (NPS)
		Promoters		Passives	Detractors		
S.No.	Attributes	No. of Responses strongly agreed	No. of Responses agreed	No. of Responses neutral	No. of Responses disagreed	No. of Responses strongly disagreed	
1	How far the courses meet the requirements of the industry?	78	91	12	0	0	93.37
2	Are the students able to transfer skills from courses included in the Programme to work place?	102	67	12	0	0	93.12
3	Does the specialized curriculum help students to attain excellence in their career?	126	44	11	0	0	94.05
4	Do the students demonstrate enough soft skills and technical skills needed by the job?	99	68	14	0	0	92.34
5	Do the students demonstrate adequate critical thinking and problem-solving abilities?	152	21	2	6	0	92.11
6	How far the training and internship completed by the students help in understanding the roles and responsibilities of the work place?	125	45	11	0	0	93.68
7	The curriculum has a balance of discipline specific courses, basic sciences, Humanities, and Management courses.	133	35	13	0	0	92.58
8	Do the students demonstrate the adequate managerial / leadership qualities and professional ethics?	147	25	9	0	0	95.02

SRM UNIVERSITY DELHI-NCR, SONEPAT

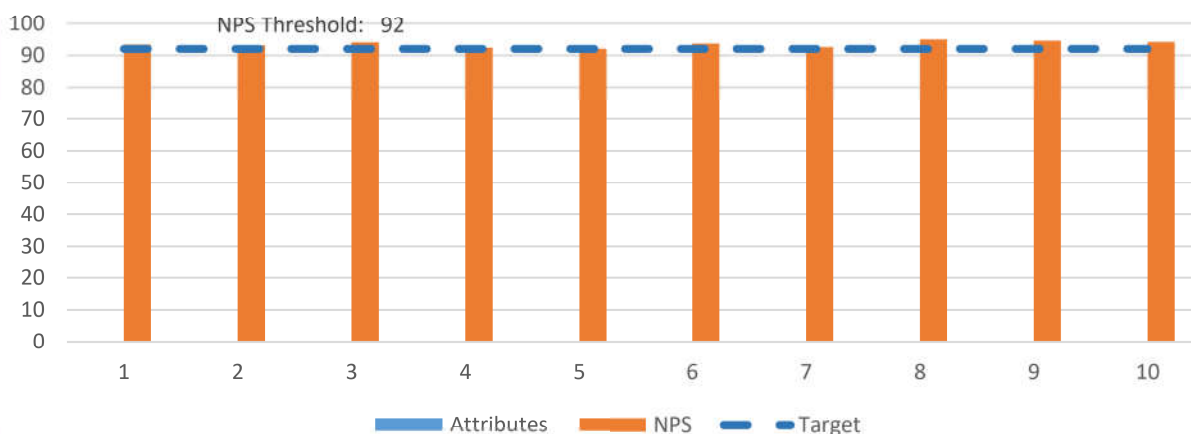
Established under Haryana Private Universities Act 2006 as amended by Act no.8 of 2013 and recognized by UGC u/s 2(f) of UGC Act, 1956

39, Rajiv Gandhi Education City, Delhi-NCR, Sonapat-131029, Haryana (India)

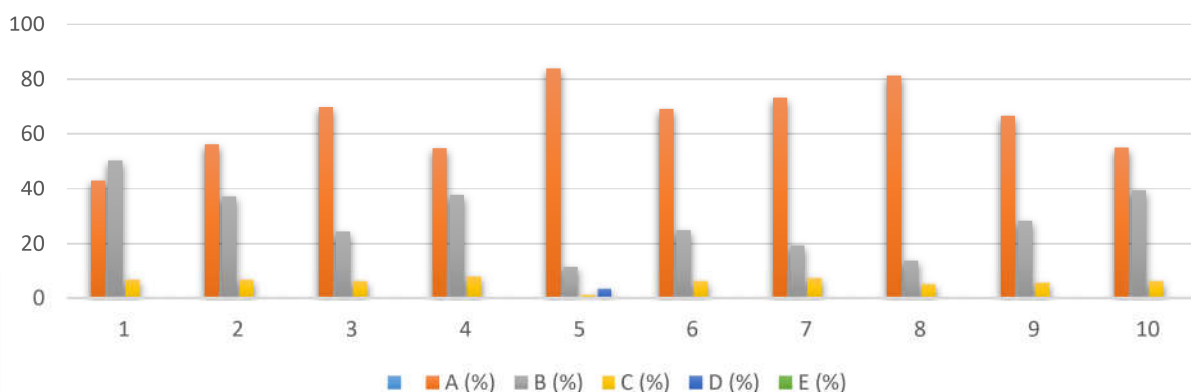
Tel : 0130-2203700-01 | Tollfree : 1800 180 1216 | Website : www.srmuniversity.ac.in

9	Do the students have the potential to engage in continuous learning and up gradation of their knowledge and skills?	120	51	10	0	0	94.56
10	Does the revised curriculum meet the emerging needs of the industry?	99	71	11	0	0	94.13

NPS Score Chart



Percentage Chart



SRM UNIVERSITY DELHI-NCR, SONEPAT

Established under Haryana Private Universities Act 2006 as amended by Act no.8 of 2013 and recognized by UGC u/s 2(f) of UGC Act, 1956

39, Rajiv Gandhi Education City, Delhi-NCR, Sonapat-131029, Haryana (India)

Tel : 0130-2203700-01 | Tollfree : 1800 180 1216 | Website : www.srmuniversity.ac.in

(E) Stakeholder: Parents

Parents Feedback Analysis 2022-23

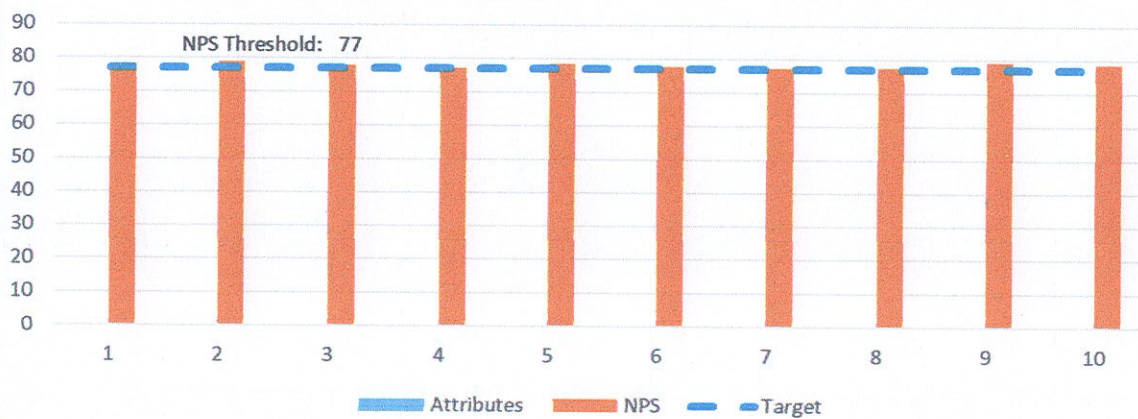
TOTAL NUMBER OF RESPONSES: 266				NPS Threshold: 77			
		A	B	C	D	E	Net Promoter Score (NPS)
		Promoters		Passives	Detractors		
S.No.	Attributes	No. of Responses strongly agreed	No. of Responses agreed	No. of Responses neutral	No. of Responses disagreed	No. of Responses strongly disagreed	
1	The infrastructural facilities (library, hostel, Sports) at the university are excellent.	116	100	42	7	1	78.11
2	The academic skills and knowledge of the faculty is satisfactory.	137	82	38	6	3	78.78
3	Sufficient resources both academic and nonacademic are available for the students.	134	89	27	11	5	77.88
4	The authorities are easily approachable for any queries and problems.	133	91	23	11	8	77.00
5	Extra-classes are provided to the learners on a requirement basis.	145	73	38	6	4	78.33
6	The students are given enough exposure as far as career-orientation is concerned.	123	96	35	9	3	77.67
7	The curriculum will make the learner employable and industry ready.	116	105	29	8	8	77.22
8	The university focuses on extra-curricular and sport activities and treats these as an essential part of holistic learning.	118	93	50	2	3	77.44



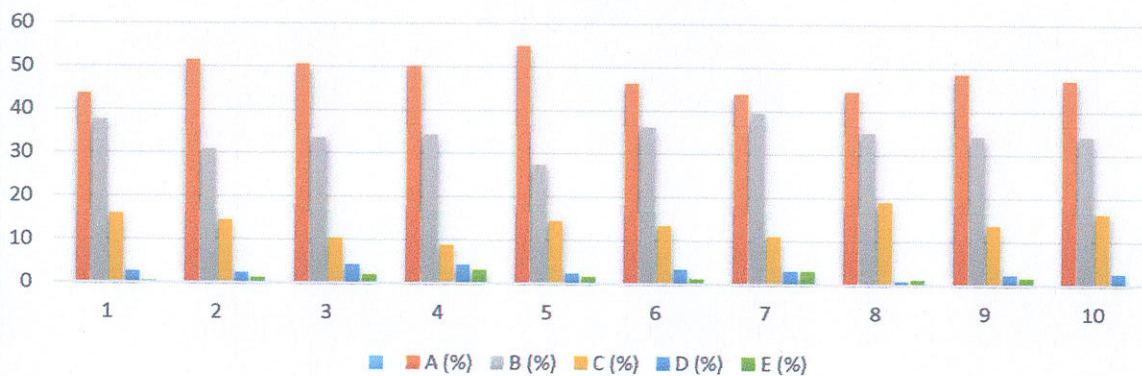
SRM
UNIVERSITY
DELHI-NCR, SONEPAT

9	The university campus is a safe and secure place for learners.	129	91	36	6	4	79.02
10	There is a positive change in the behaviour of the learner after joining the university.	125	91	43	7	0	78.56

NPS Score Chart



Percentage Chart



[Handwritten Signature]

Coordinator (IQAC)
SRM University Delhi-NCR,
39, RSEC, Sonapat-1310029, HR

SRM UNIVERSITY DELHI-NCR, SONEPAT

Established under Haryana Private Universities Act 2006 as amended by Act no.8 of 2013 and recognized by UGC u/s 2(f) of UGC Act, 1956

39, Rajiv Gandhi Education City, Delhi-NCR, Sonapat-131029, Haryana (India)
Tel : 0130-2203700-01 | Tollfree : 1800 180 1216 | Website : www.srmuniversity.ac.in